



# **GOLDZONE INVESTMENTS** APRIL 2025





# NOTICE

This presentation has been prepared by Yilgarn Group Limited (“YGL” or “Goldzone” or “the Company”). It is not an offer, invitation or solicitation with respect to any investment in the Company. This presentation is for information purposes only, is not a disclosure document under Chapter 6D of the Corporations Act 2001 (Cth) and has not been lodged with ASX or ASIC.

The Company’s mineral tenements are at various stages of exploration and development, or in care and maintenance. Mineral exploration and development are high-risk undertakings. There can be no assurance that exploration and development will result in the discovery of an economic ore deposit. Even if an apparently viable deposit is identified, there is no guarantee that it can be economically exploited.

This presentation may contain forward looking statements. Such forward looking statements are point in time estimates for discussion purposes only and should not be relied upon. They are not guarantees of future performance and involve known and unknown risks, uncertainties and other factors many of which are beyond the control of Yilgarn Group. Forward-looking statements are inherently uncertain and may therefore differ materially from results ultimately achieved.

Yilgarn Group does not make any representations and provides no warranties concerning the accuracy of this presentation and disclaims any obligation to update any information or forward-looking statements, except to the extent required by applicable law.

While this presentation has been prepared in good faith, to the maximum extent permitted by law, neither Yilgarn Group nor any of its directors, officers, agents, employees or advisors (Personnel) give any representation or warranty, express or implied, as to the fairness, accuracy, completeness or correctness of this presentation. Accordingly, to the maximum extent permitted by law, neither YGL nor its Personnel accept any liability in connection with this presentation (including for omissions).

A recipient of this presentation must make their own investigations, assessment and analysis of the matters contained herein and rely on their own investigations and judgment in making any investment in the Company. This presentation does not purport to contain all the information that investors and their professional advisers would reasonably require to make an informed assessment of the Company’s assets and liabilities, financial position and performance, profits, losses and prospects.

This presentation provides an incomplete overview only, is not a recommendation, does not constitute financial advice and has been prepared without regard for any recipient’s objectives, circumstances or needs. Prospective investors should consult their own legal, accounting and professional financial advisers.

Cover Photo Mt Jackson Project area



# GOLDZONE - BUILDING A WORLD-CLASS RESOURCE COMPANY IN A TIER 1 SECTOR

## FLAGSHIP ASSETS

GOLD

IRON ORE

LITHIUM / RARE EARTH ELEMENTS

COPPER

## PRIME LOCATIONS

YILGARN CRATON - TIER 1, LOW RISK REGION

- KEY AREAS ADJOIN ACTIVE MINING OPERATIONS
- HIGHLY PROSPECTIVE GREENSTONE TRENDS
- ACTIVE GOLD MINING TENEMENTS

## MATERIAL SCALE

44 TENEMENTS EXTENDING OVER 1,600 SQ KM

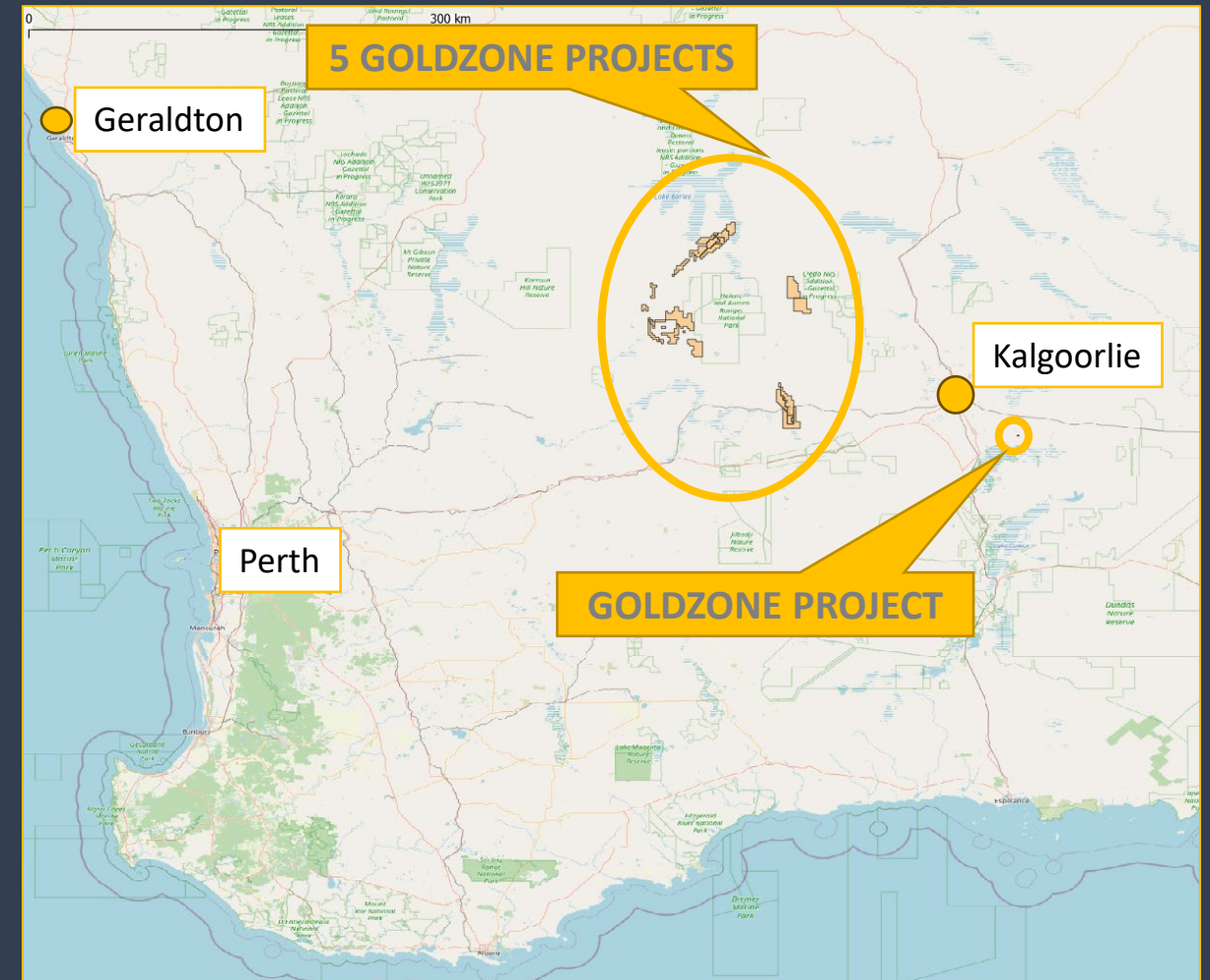




# GOLDZONE - BUILDING A WORLD-CLASS RESOURCE COMPANY IN A TIER 1 SECTOR

## GOLDZONE IN THE YILGARN CRATON

- 5 PROJECT AREAS
- APP. 175 KM WNW FROM KALGOORLIE
- 44 TENEMENTS, INCLUDING 3 MINING LICENSES
- 1,646 SQ KM





## PORTFOLIO DIVERSITY



GOLD



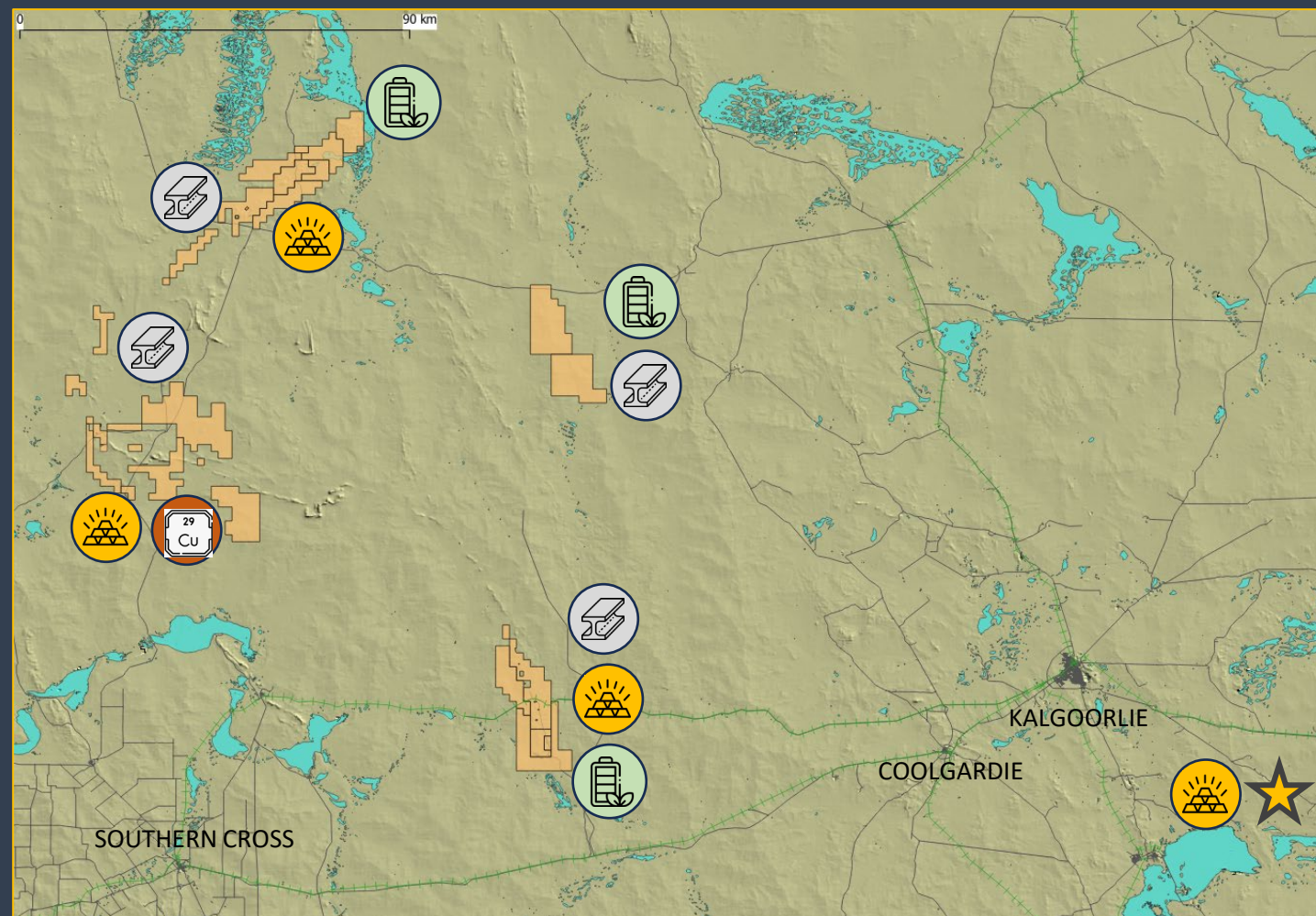
IRON ORE – HEMATITE  
MAGNETITE



LITHIUM / RARE EARTHS



COPPER





## GOLD

### JOHNSTON RANGE

- BROADBENT AND ZONE F MINES (GZI 100%)  
LEGACY MINES IN REGION AND ON-TREND

### MT JACKSON

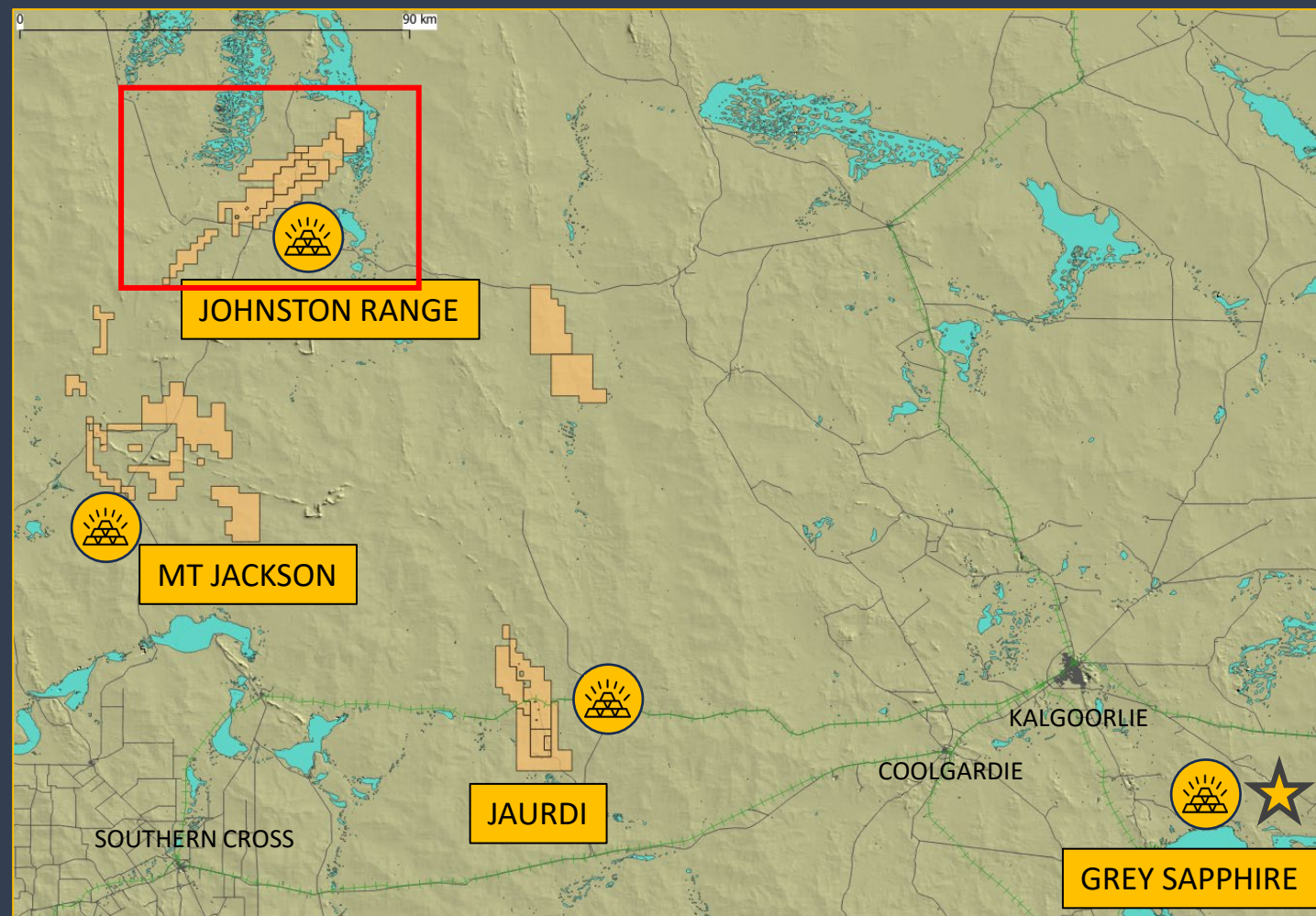
- HISTORIC GOLD MINING SECTOR
- GZI HAS COMMANDING TENEMENT POSITIONS

### JAURDI

- HISTORIC GOLD MINING SECTOR
- SEVEN KM PROSPECT IDENTIFIED

### GREY SAPPHIRE

- JORC RESOURCE / MINE PLAN



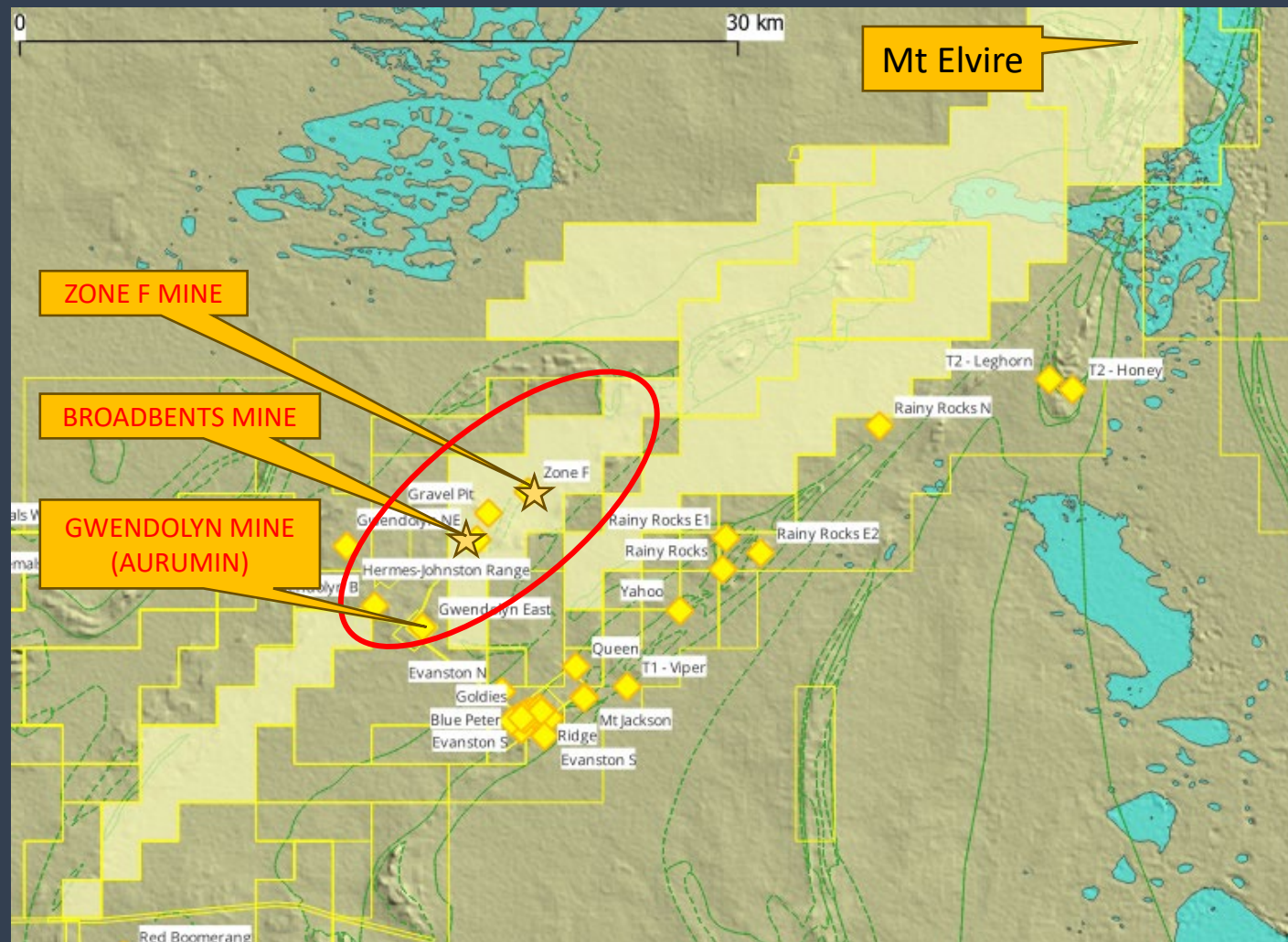




## JOHNSTON RANGE

- 10 TENEMENTS INCLUDING 2 MINING LEASES COVERING 360 SQ KM
- ESTABLISHED GZI CAMP AT BROADBENTS MINE
- 2022 RAB DRILLING PROGRAM AT BROADBENTS REVEALED POTENTIAL TO EXPAND EXISTING MINE
- 2024 TECHNICAL REVIEW CONFIRMED PROSPECTIVITY OF THE BROADBENTS – ZONE F TREND - DEEPER POTENTIAL (>50M) STILL UNTESTED
- 2025 GEOPHYSICAL SURVEY PLANNED WITH DRILLING TO FOLLOW RE-MAPPING

Goldzone Tenements



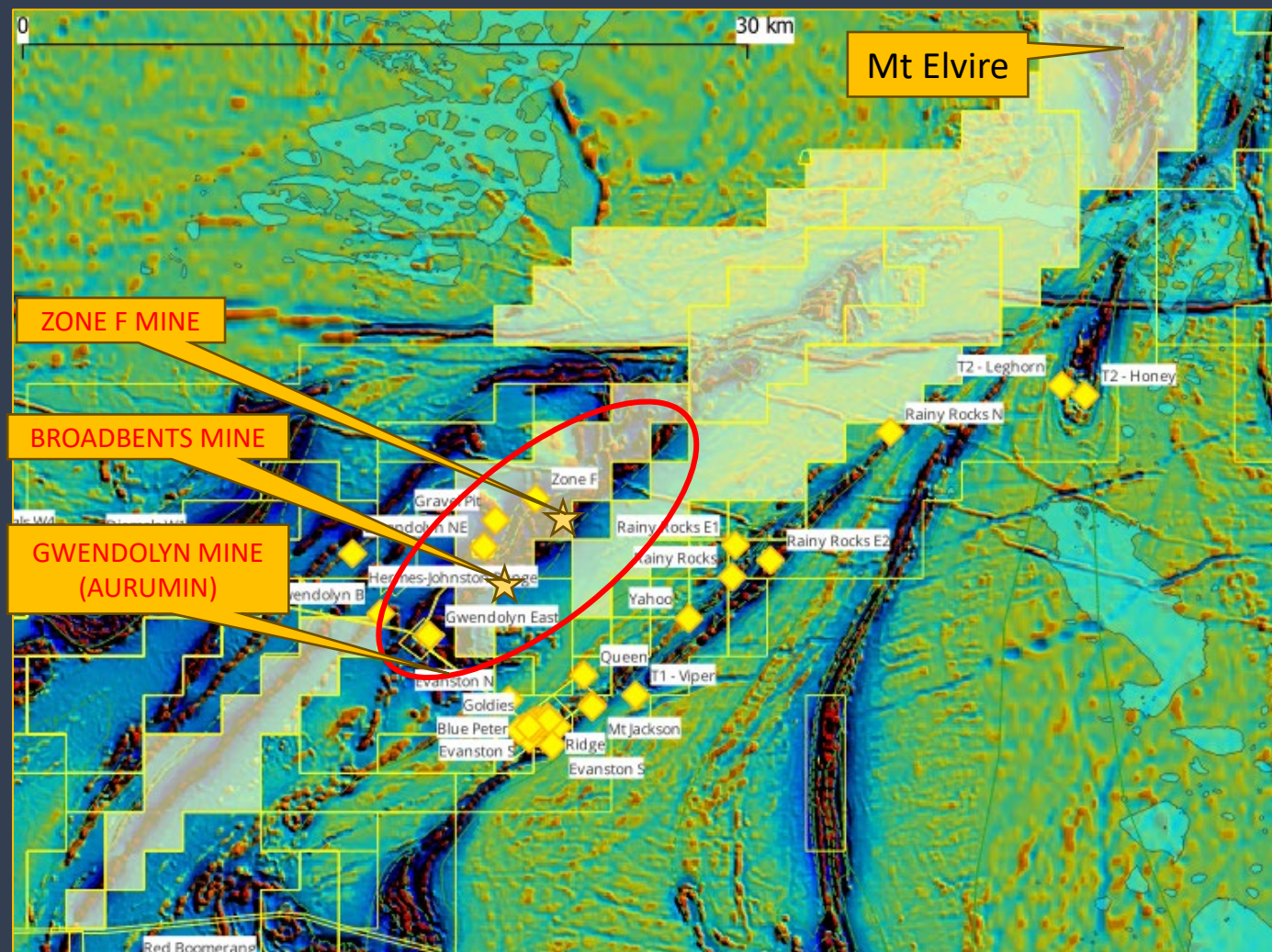




## JOHNSTON RANGE

- 10 TENEMENTS INCLUDING 2 MINING LEASES COVERING 360 SQ KM
- ESTABLISHED GZI CAMP AT BROADBENTS MINE
- 2022 RAB DRILLING PROGRAM AT BROADBENTS REVEALED POTENTIAL TO EXPAND EXISTING MINE
- 2024 TECHNICAL REVIEW CONFIRMED PROSPECTIVITY OF THE BROADBENTS – ZONE F TREND - DEEPER POTENTIAL (>50M) STILL UNTESTED
- 2025 GEOPHYSICAL SURVEY PLANNED WITH DRILLING TO FOLLOW RE-MAPPING

Goldzone Tenements over Aeromag (RTP1VD)





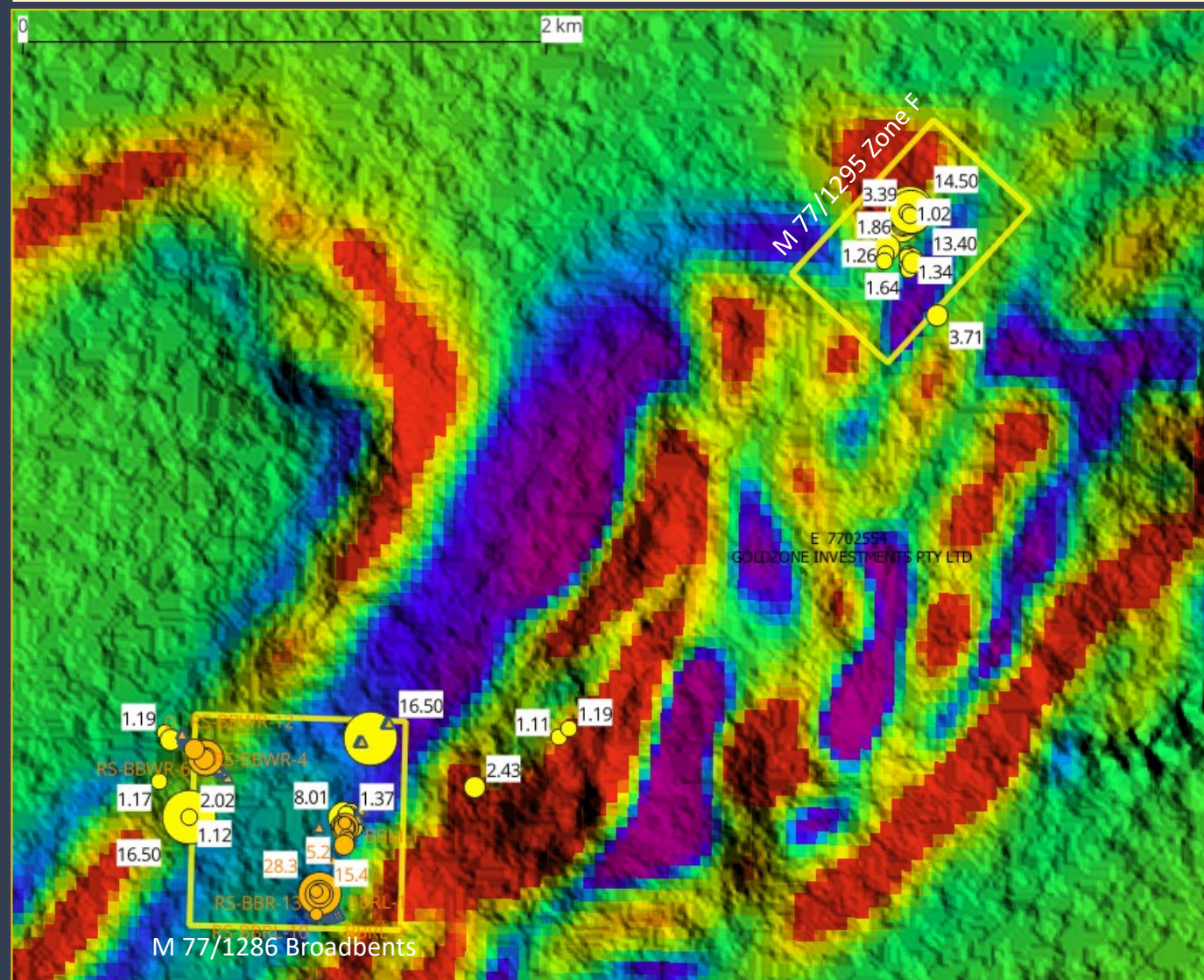


## JOHNSTON RANGE MINES

### BROADBENTS / ZONE F

- ENCOURAGING RAB DRILLING RESULTS UP TO 28.3 GRAMS/TONNE (G/T) GOLD WITHIN LICENSE
- BROADBENTS MINE LOCATION AND RAB DRILLING RESULTS ALIGN WITH EDGE OF NE/SW TRENDING MAGNETIC ANOMALY – OPPORTUNITY TO INVESTIGATE MINE EXTENSION / INFILL BETWEEN PITS.
- ONGOING WORK TO DETAIL GWENDOLYN - BROADBENTS - ZONE F TREND
- DRILLING TO FOLLOW

Broadbents to Zone F – Aeromag RTP1VD over DEM; Au in g/t (Yellow = surface; orange = RAB drilling)







## JOHNSTON RANGE MINES

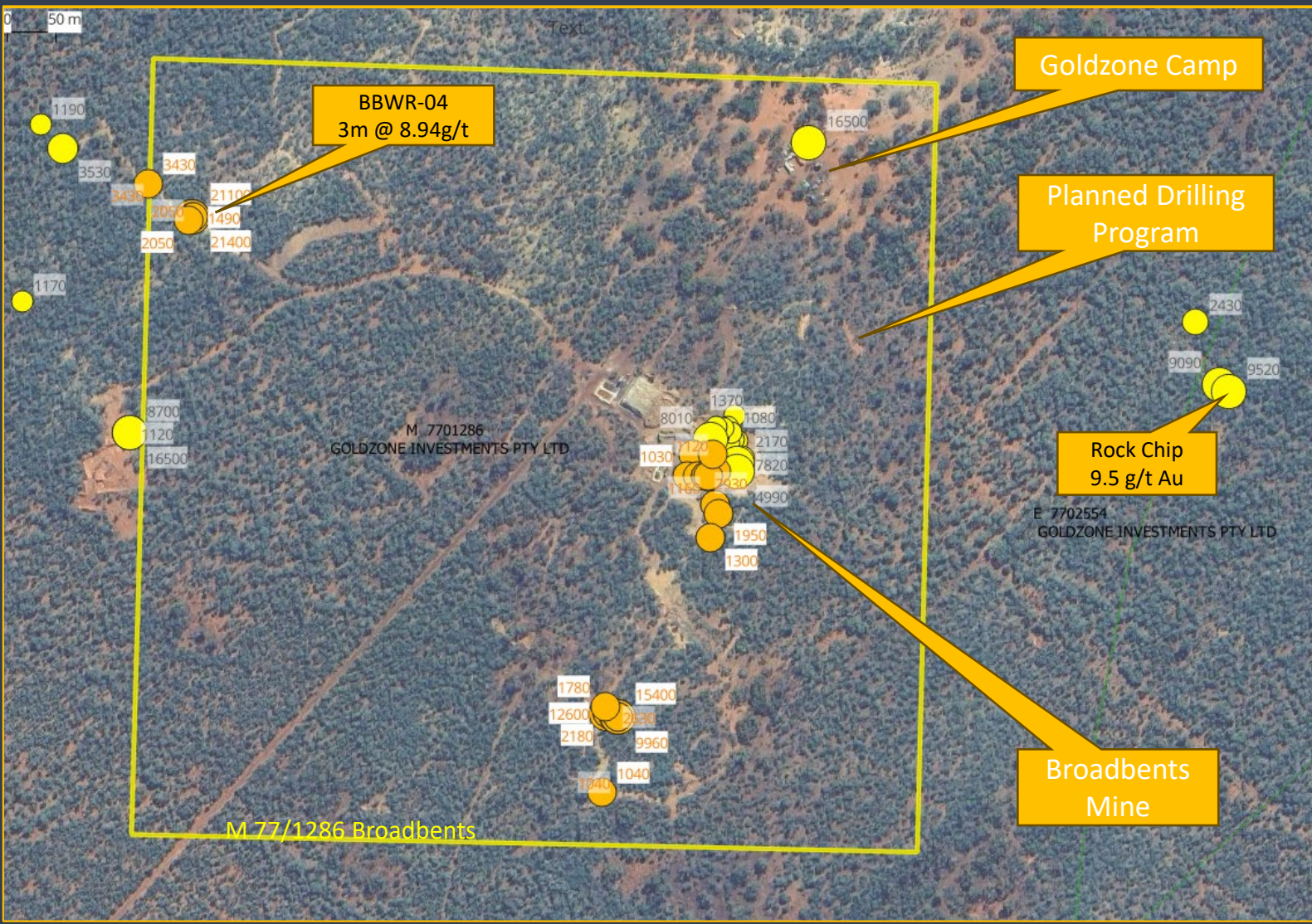
### BROADBENTS

- ENCOURAGING DRILLING RESULTS (UP TO 28.3 G/T GOLD) WITHIN LICENSE
- RECENT SAMPLING REVEALS GOLD UP TO 9.5 G/T (9520 PPB) AT SURFACE APPROX 500M ENE OF MINE

*Drill results – Gold intercepts*

Hole_ID	Hole Type	Max Depth	From Depth	To Depth	Intercept Description
BBR-11	RAB	34	29	34	5m @ 8.98g/t Au
BBR-11	RAB	34	8	11	3m @ 5.93g/t Au
BBWR-04	RAB	40	0	3	3m @ 8.94g/t Au
BBWR-07	RAB	40	5	6	1m @ 3.43g/t Au
BBR-01	RAB	30	6	12	6m @ 2.77g/t Au
BBWR-05	RAB	40	33	34	1m @ 2.05g/t Au
BBR-02	RAB	55	42	44	2m @ 1.97g/t Au
BBR-03	RAB	48	0	2	2m @ 1.93g/t Au
BBR-12	RAB	40	37	39	2m @ 1.29g/t Au
BBR-06	RAB	37	3	4	1m @ 1.27g/t Au
BBR-08	RAB	18	8	12	4m @ 1.16g/t Au
BBR-07	RAB	22	8	11	3m @ 1.10g/t Au
BBR-02	RAB	55	20	24	4m @ 1.04g/t Au

Broadbents – Au in ppm (Yellow = surface; orange = RAB drilling; Au in ppb)





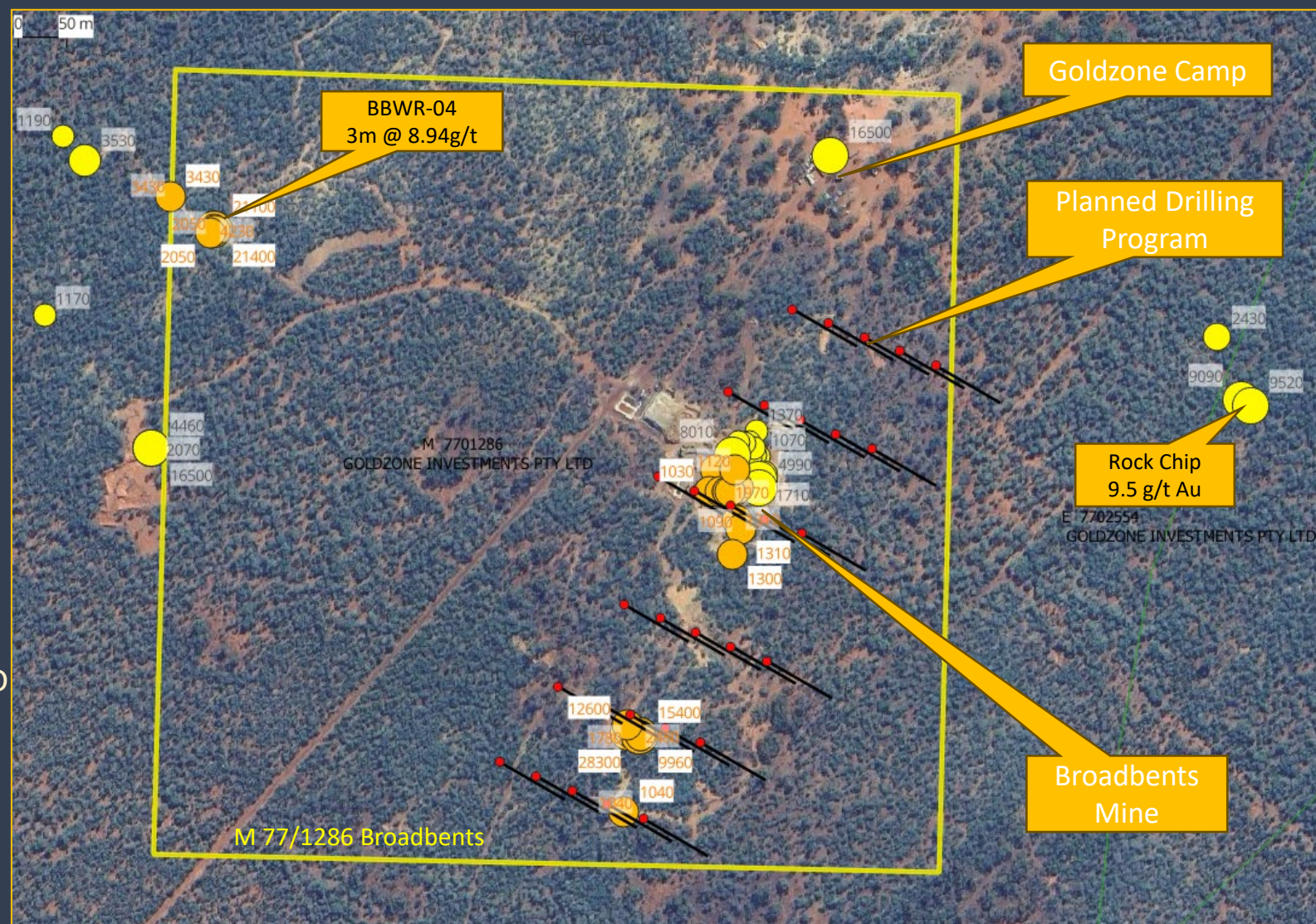


## JOHNSTON RANGE MINES

### BROADBENTS

- 2025 POTENTIAL DRILLING PROGRAM
- INVESTIGATES PROSPECTIVE TREND CENTERED OVER MINE
- 30 DRILL HOLES
- 120 M / 60 DEG DIP
- 3,600M IN TOTAL
- PROGRAM DESIGN AND TIMING TO BE FINALISED AND SUBJECT TO TECHNICAL AND FUNDING CONDITIONS

Broadbents – Au in ppm (Yellow = surface; orange = RAB drilling; Au in ppb)





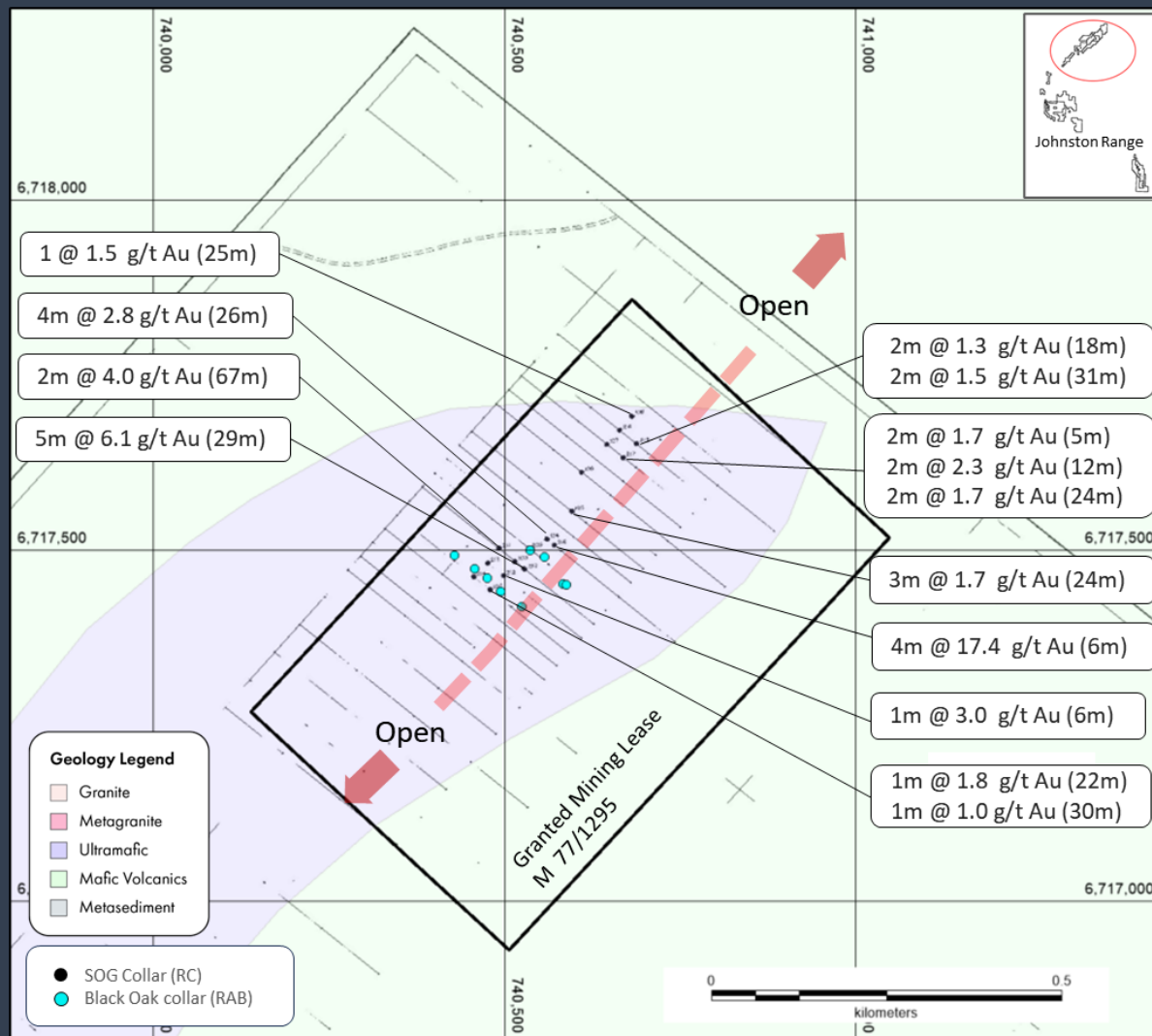
## JOHNSTON RANGE MINES

### ZONE F

THE NORTHERN EXTENT OF THE SONS OF GWALIA RC DRILLING SHOWS

- +1.5 G/T AU GRADES
- MULTIPLE ZONES OF 1-3M THICK MINERALISATION
- SHALLOW POTENTIALLY SUITABLE FOR OPEN PIT MINING
- OPEN IN ALL DIRECTIONS

### Zone F – Historical Drilling



Drill Collars against Geology





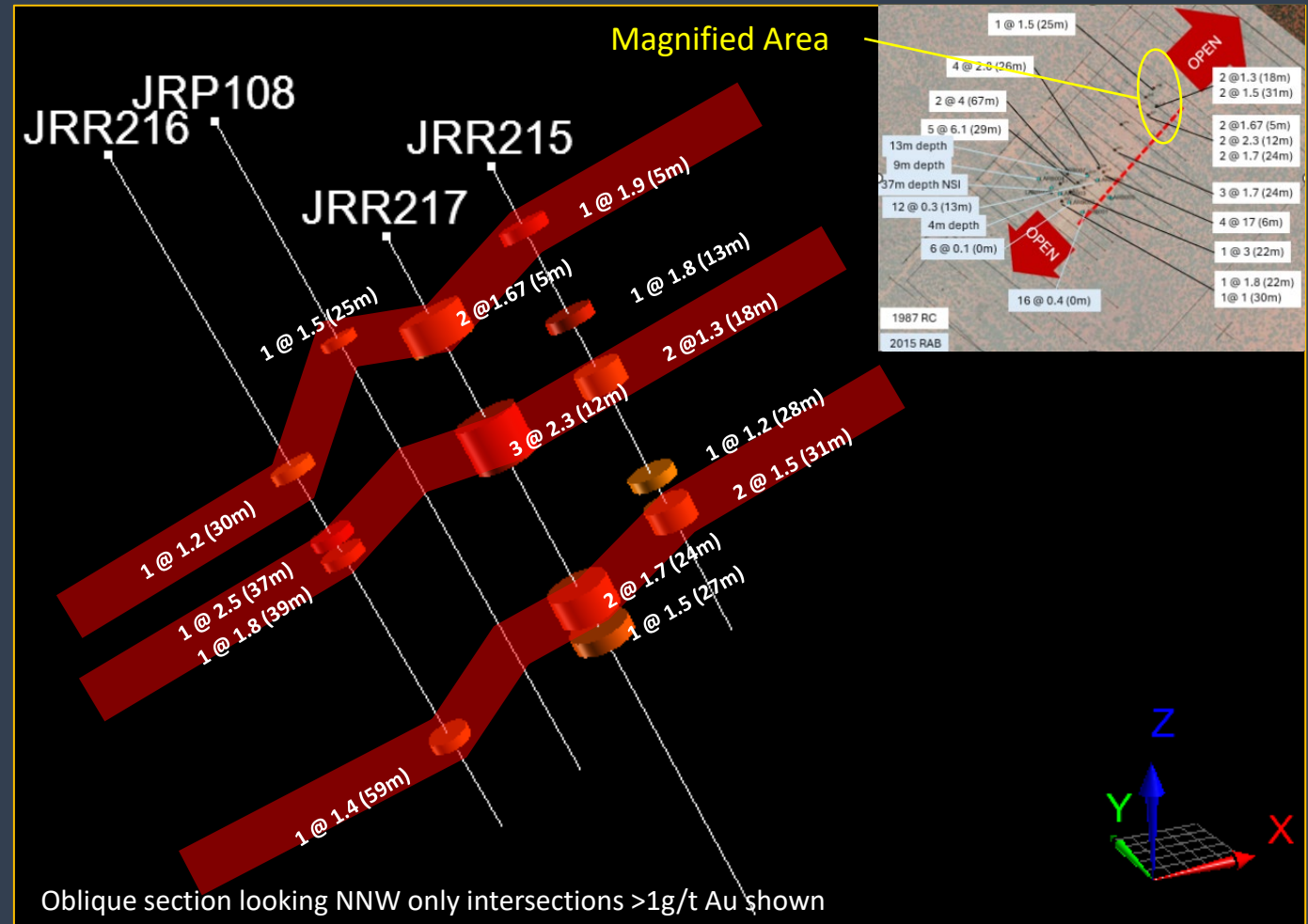
## JOHNSTON RANGE MINES

### ZONE F

THE NORTHERN EXTENT OF THE SONS OF GWALIA RC DRILLING SHOWS

- +1.5 G/T AU GRADES
- MULTIPLE ZONES OF 1-3M THICK MINERALISATION
- SHALLOW POTENTIALLY SUITABLE FOR OPEN PIT MINING
- OPEN IN ALL DIRECTIONS

Zone F – Cross-section



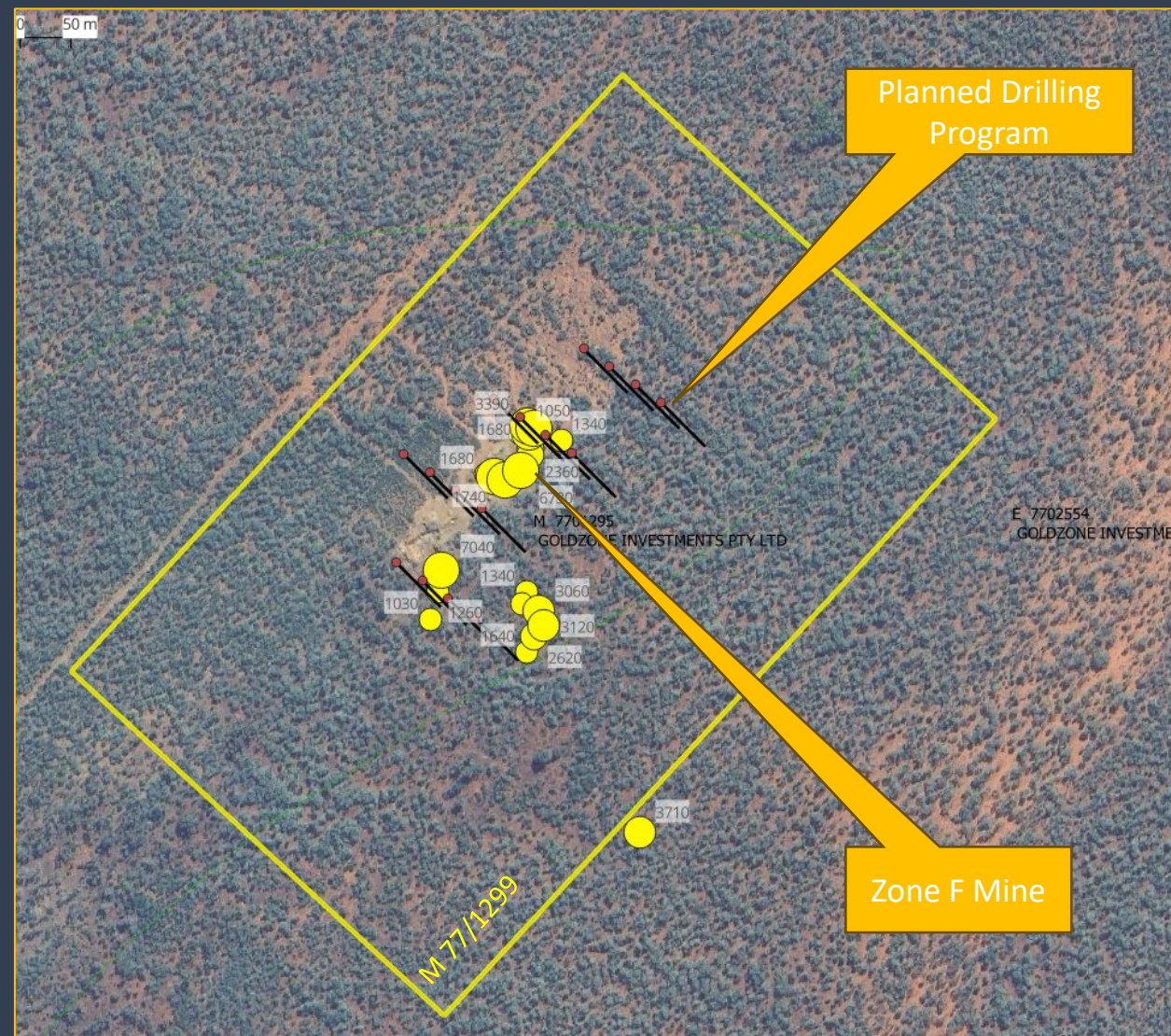


## JOHNSTON RANGE MINES

### ZONE F

- 2025 POTENTIAL DRILLING PROGRAM
- INVESTIGATES PROSPECTIVE TREND CENTERED OVER ZONE F MINE
- 16 DRILL HOLES
- 120 M / 60 DEG DIP
- 1,902M IN TOTAL
- PROGRAM DESIGN AND TIMING TO BE FINALISED AND SUBJECT TO TECHNICAL AND FUNDING CONDITIONS

Zone F – Au in ppm (Yellow = surface; Au in ppb)







## GOLD

### JOHNSTON RANGE

- BROADBENT AND ZONE F MINES (GZI 100%)  
LEGACY MINES IN REGION AND ON-TREND

### MT JACKSON

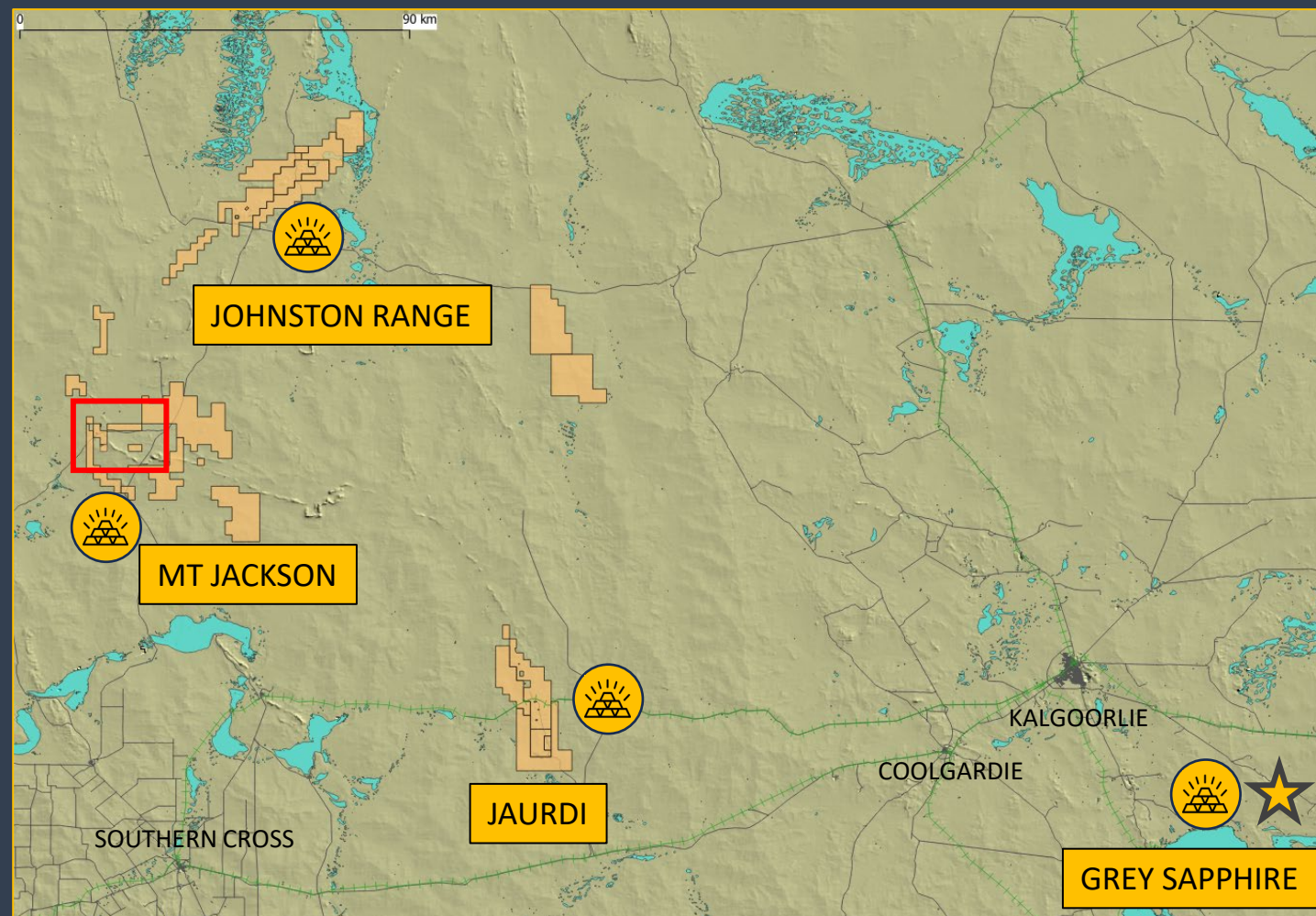
- HISTORIC GOLD MINING SECTOR
- GZI HAS COMMANDING TENEMENT POSITIONS

### JAURDI

- HISTORIC GOLD MINING SECTOR
- SEVEN KM PROSPECT IDENTIFIED

### GREY SAPPHIRE

- JORC RESOURCE / MINE PLAN



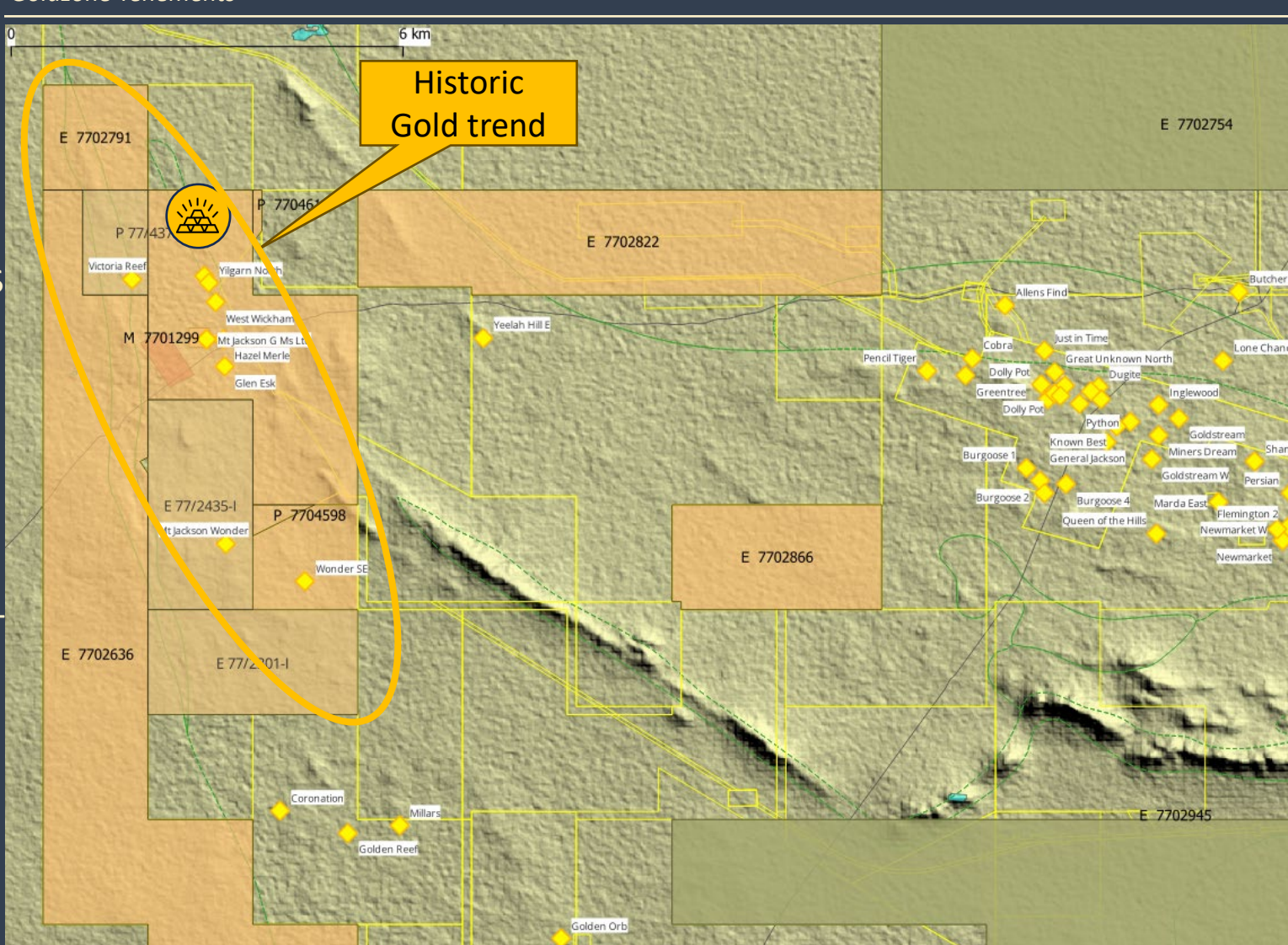




## MT JACKSON

- COMMANDING TENEMENT POSITION OVER AN 11 KM HISTORIC PRODUCTIVE TREND WITH OPTIONS AVAILABLE TO ADD (SUB-ALLUVIAL RIGHTS) IN ADJOINING TENEMENTS
- NUMEROUS SHALLOW (<40M DEPTH) HISTORIC MINES LOCATED WITHIN AN AREA OF STRUCTURAL CONVERGENCE TOWARD THE REGIONAL SCALE KOOLYANOBING SHEAR ZONE.
- 2024 GEOTECHNICAL REVIEW CONFIRMS PROSPECTIVITY AND EXPLORATION UPSIDE AT DEPTH AND ALONG STRIKE OF LEGACY PRODUCTION.
- EXCELLENT POTENTIAL FOR ADDITIONAL DISCOVERIES ALONG PRIMARY TREND

Goldzone Tenements







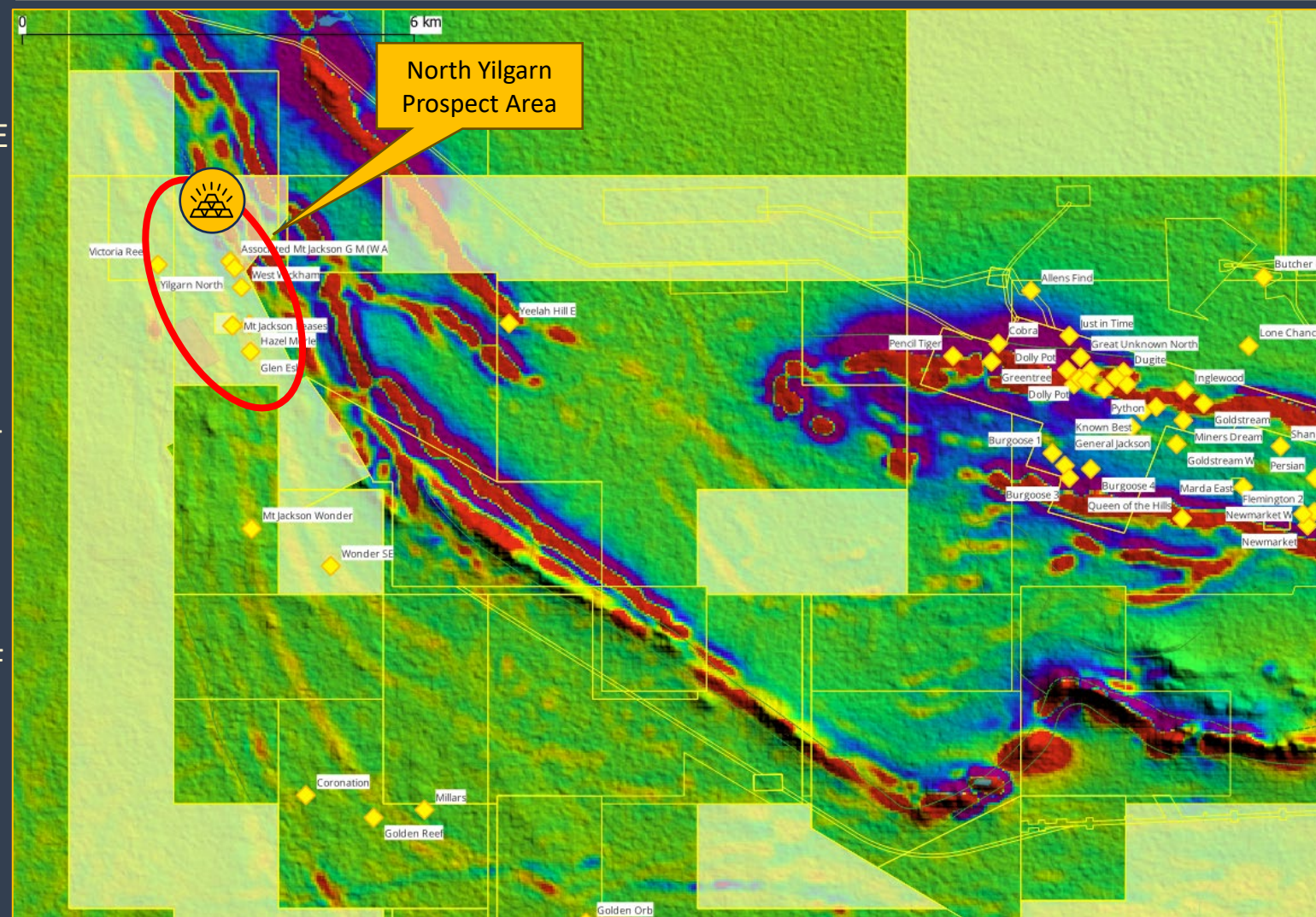
## MT JACKSON

THE FOCUS OF DISTRICT EXPLORATION SINCE THE 1980'S HAS BEEN ON THE KNOWN GOLD MINERALISATION AROUND THE HISTORICAL WORKINGS AND CONSEQUENTLY THE DEPTH POTENTIAL REMAINS LARGELY UNTESTED.

### NORTH YILGARN PROSPECT AREA<sup>1</sup>

- RAB INTERSECTIONS INCLUDE 14M @ 1.8 G/T (27-41M) WITH 8M @ 2.8 G/T (29-37M) (JARB006). NOTE NO PRE-2008 DRILLING EXTENDED BELOW 40M DEPTH.
- POLARIS METALS NOTED MINERALISATION OF APP 60,000 TONNES GRADING 1.5 G/T INFERRED TO 50 M (NON-JORC COMPLIANT)
- STRONG TRENDS NOTED IN GRIDDED GOLD SOIL ASSAYS<sup>2</sup>

Goldzone Tenements over Aeromag (RTP1VD)



<sup>1,2</sup> Final Surrender Report - Prospecting Licence 77 / 3963; Goldzone Investments, 2022





## GOLD

### JOHNSTON RANGE

- BROADBENT AND ZONE F MINES (GZI 100%)  
LEGACY MINES IN REGION AND ON-TREND

### MT JACKSON

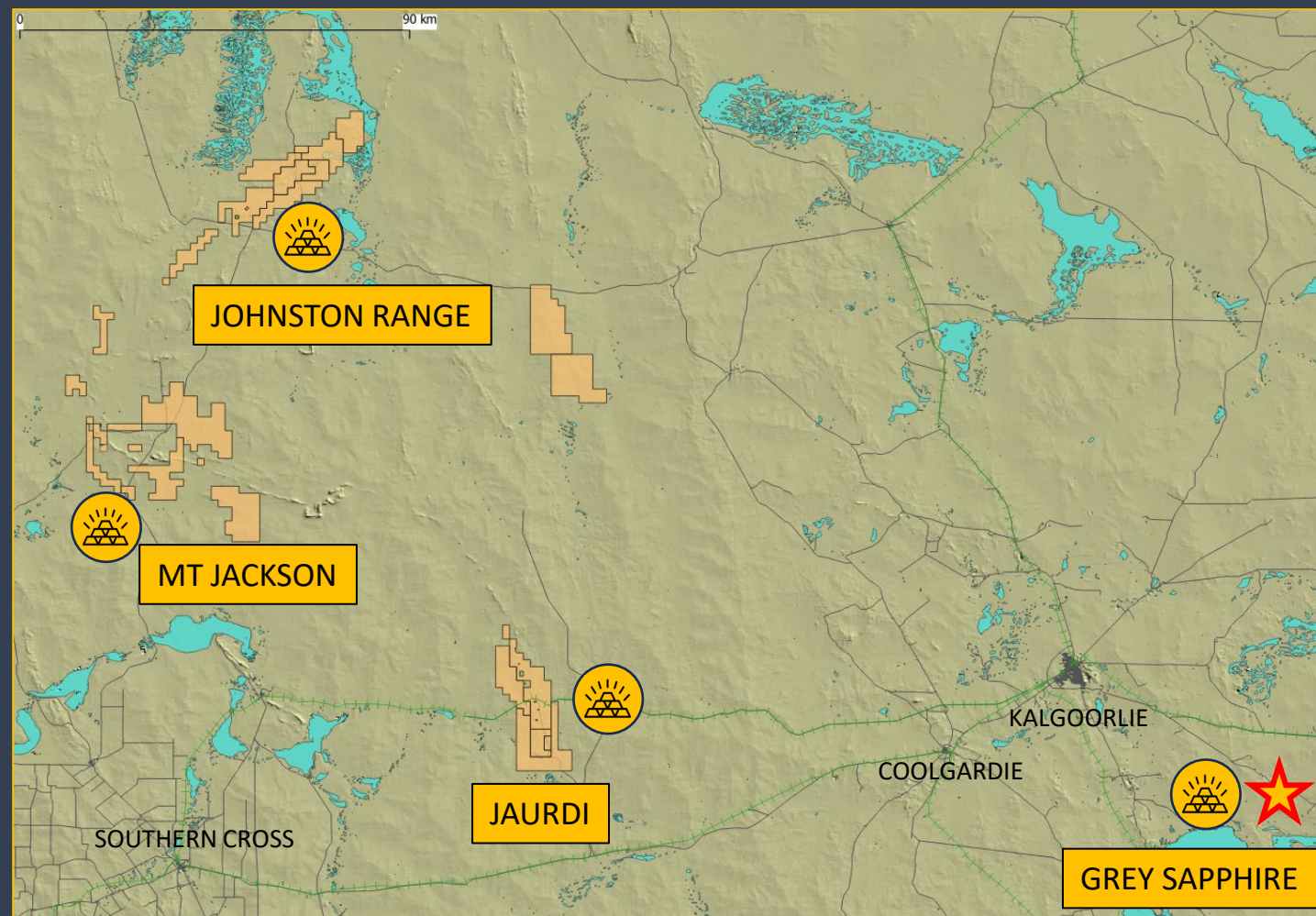
- HISTORIC GOLD MINING SECTOR
- GZI HAS COMMANDING TENEMENT POSITIONS

### JAUARDI

- HISTORIC GOLD MINING SECTOR
- SEVEN KM PROSPECT IDENTIFIED

### GREY SAPPHIRE

- JORC RESOURCE / MINE PLAN



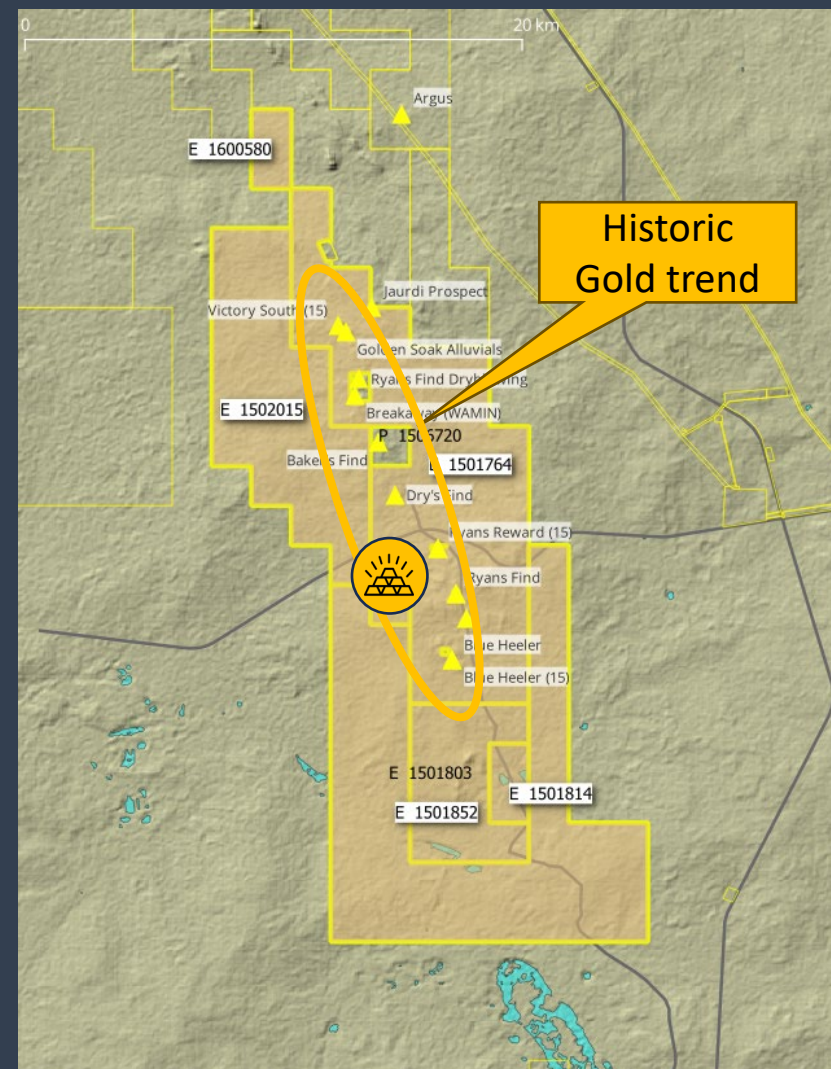




## JAUARDI

- LARGE CONSOLIDATED PACKAGE OVER THE WATT HILL GREENSTONE BELT (SOUTH- EAST EXTENSION OF MARDA-DIEMALS)
- LINE OF HISTORICAL WORKINGS BASED ON HIGH GRADE MINERALISATION IN SHEAR ZONES IN ULTRAMAFIC AND BIF
- RAMELIUS'S TASMAN AND FLINDERS PROSPECT TO THE NORTH
  - 5M @ 66.7 G/T AU
  - 8M @ 14.40 G/T AU
  - 13M @ 4.37 G/T AU
- MAJORITY OF GOLD EXPLORATION WAS COMPLETED IN 1990'S (<AU\$500/OZ) AND SINCE THEN FOCUS HAS BEEN ON IRON ORE.

Goldzone Tenements

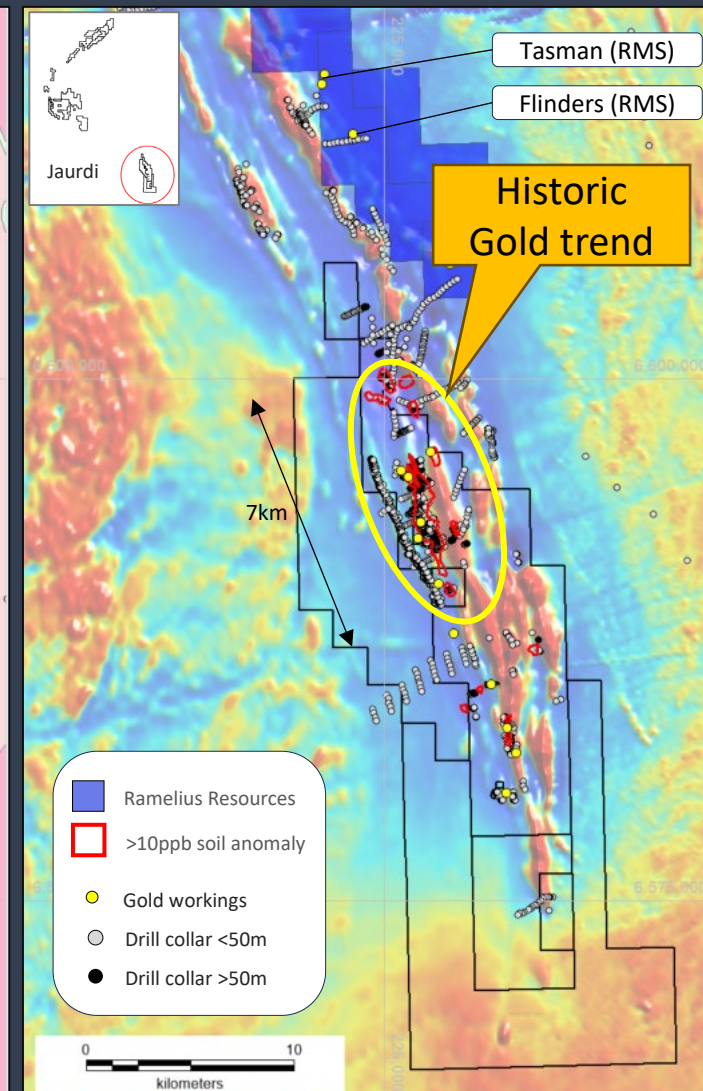
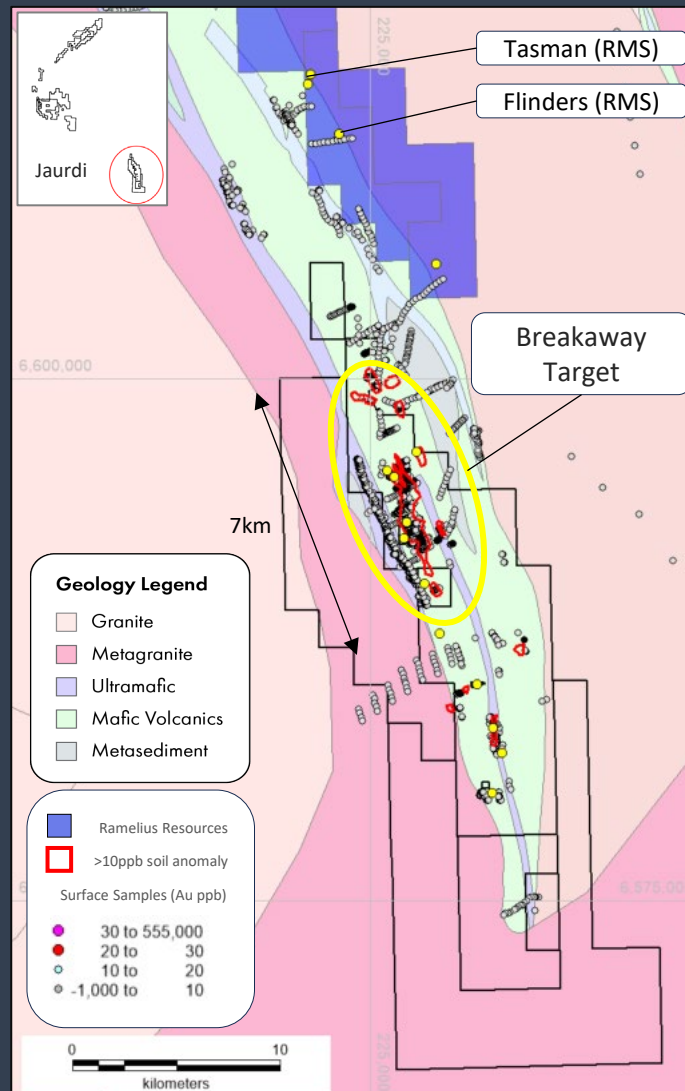




## JAURDI

- HUGE 7KM LONG GOLD IN SOIL ANOMALY DEFINED ADJACENT TO BIF
- DRILLING HAS HIT HIGH GRADE MINERALISATION IN OXIDISED AND FRESH
- MANY HOLES HAVE NO FOLLOW UP AND REQUIRE DRILLING ALONG STRIKE
- AREAS OF SURFACE ANOMALISM REMAIN UNTESTED BY DRILLING
- SIGNIFICANT SURFACE FOOTPRINT WITH POTENTIAL TO HOST LARGE ENDOWMENT OF MINERALISATION

### Goldzone Tenements - Breakaway Prospect







## GOLD

### JOHNSTON RANGE

- BROADBENT AND ZONE F MINES (GZI 100%)  
LEGACY MINES IN REGION AND ON-TREND

### MT JACKSON

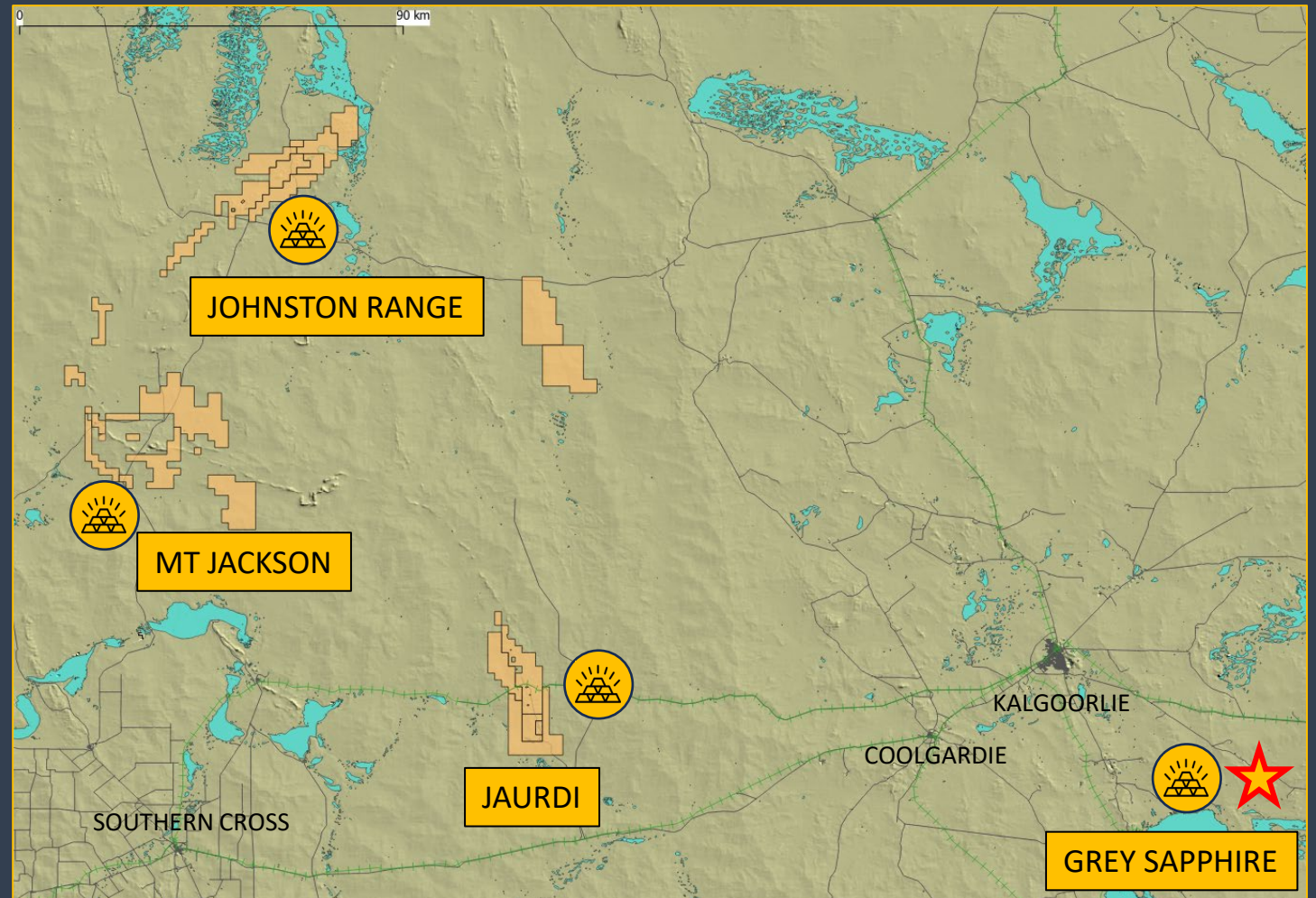
- HISTORIC GOLD MINING SECTOR
- GZI HAS COMMANDING TENEMENT POSITIONS

### JAUARDI

- HISTORIC GOLD MINING SECTOR
- SEVEN KM PROSPECT IDENTIFIED

### GREY SAPPHIRE

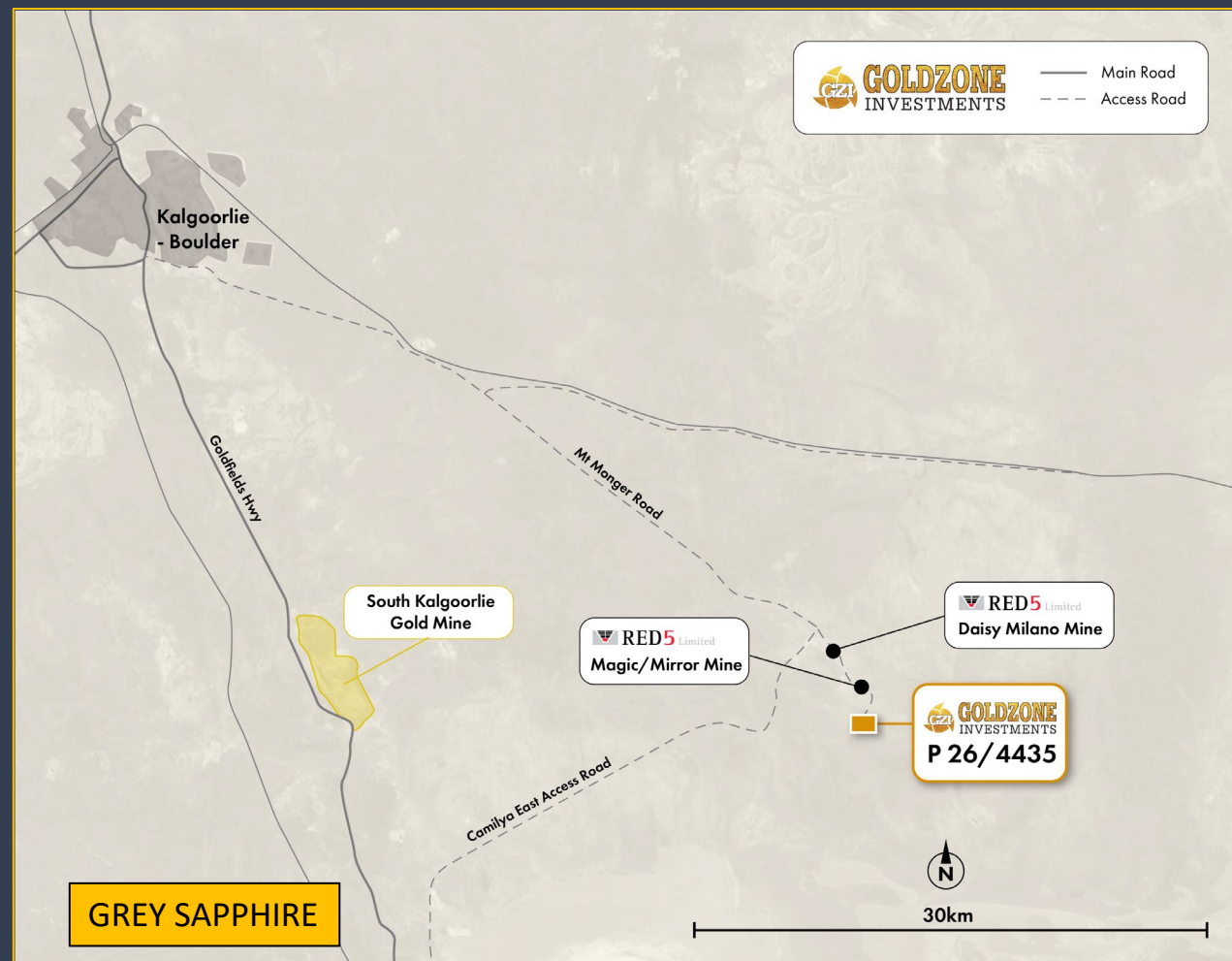
- JORC RESOURCE / MINE PLAN





## GREY SAPPHIRE – P 26/4435

- APPROX 58 KM SOUTHEAST FROM KALGOORLIE.
- CLOSE TO EXISTING INFRASTRUCTURE - 2 KM SOUTH OF RED 5 (FORMERLY SILVERLAKE) MAGIC/MIRROR MINE SITE.
- LEGACY DRILLING DEFINED JORC RESOURCE.
- MINE PLAN SUBMITTED BY PREVIOUS OPERATOR.
- GZI HAS POW IN PLACE FOR INFILL DRILLING.





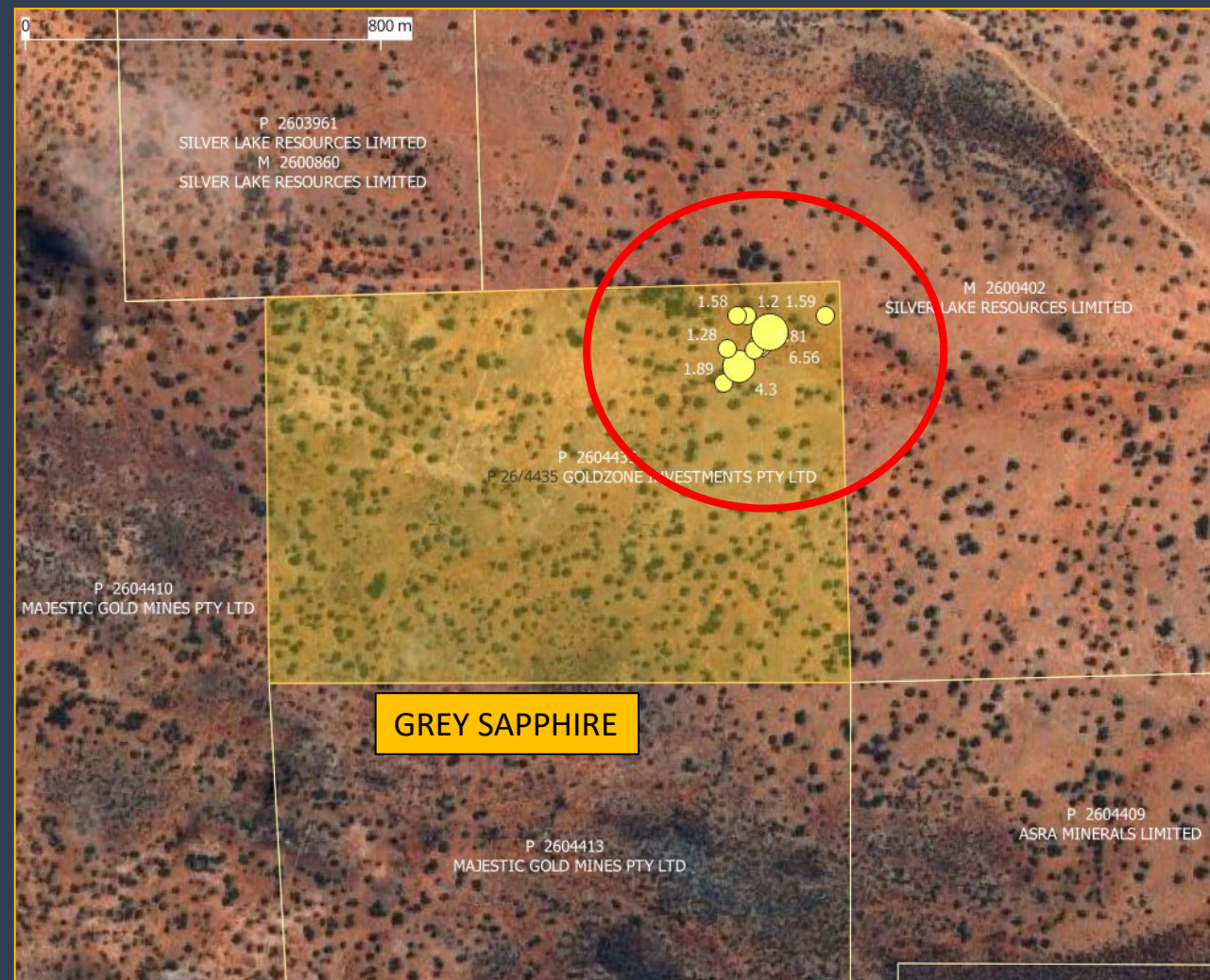


## GREY SAPPHIRE – P 26/4435

- *"THE GREY SAPPHIRE AND LIASSIC PROSPECTS DEFINED BY SILVER LAKE RESOURCES ON LEASE M26/0402 COMPRISE A JORC COMPLIANT RESOURCE OF 14,352 OUNCES (210.6 KT @ 2.12 G/T). THE STRIKE EXTENSION OF THESE RESOURCES CONTINUES TO THE SOUTH-EAST AND EXTENDS INTO P26/3173\*. FURTHER DRILLING ON P26/3173 [NOW GZI'S P26/4435], APPROXIMATELY 250 METRES TO THE SOUTH OF THE LIASSIC DEPOSIT HAS IDENTIFIED ANOTHER DISCRETE ZONE OF MINERALISATION."*<sup>1</sup>
- MINE PLAN SUBMITTED BY SILVERLAKE RESOURCES.<sup>2</sup>
- EXCELLENT POTENTIAL TO CONVERT LEGACY WORK INTO ACTIVE MINE WITH MINIMAL RISK.
- GOLDZONE HAS POW IN PLACE FOR ADDITIONAL INFILL DRILLING AS MAY BE REQUIRED.
- EXPLORATION POTENTIAL IN SW SECTOR OF TENEMENT.

<sup>1</sup> Mineralisation Report for Mining Tenement Application P 26/3173, Silverlake, July 2011

<sup>2</sup> Supporting Statement for Mining Lease over P 26/3173; Silverlake, July 2011





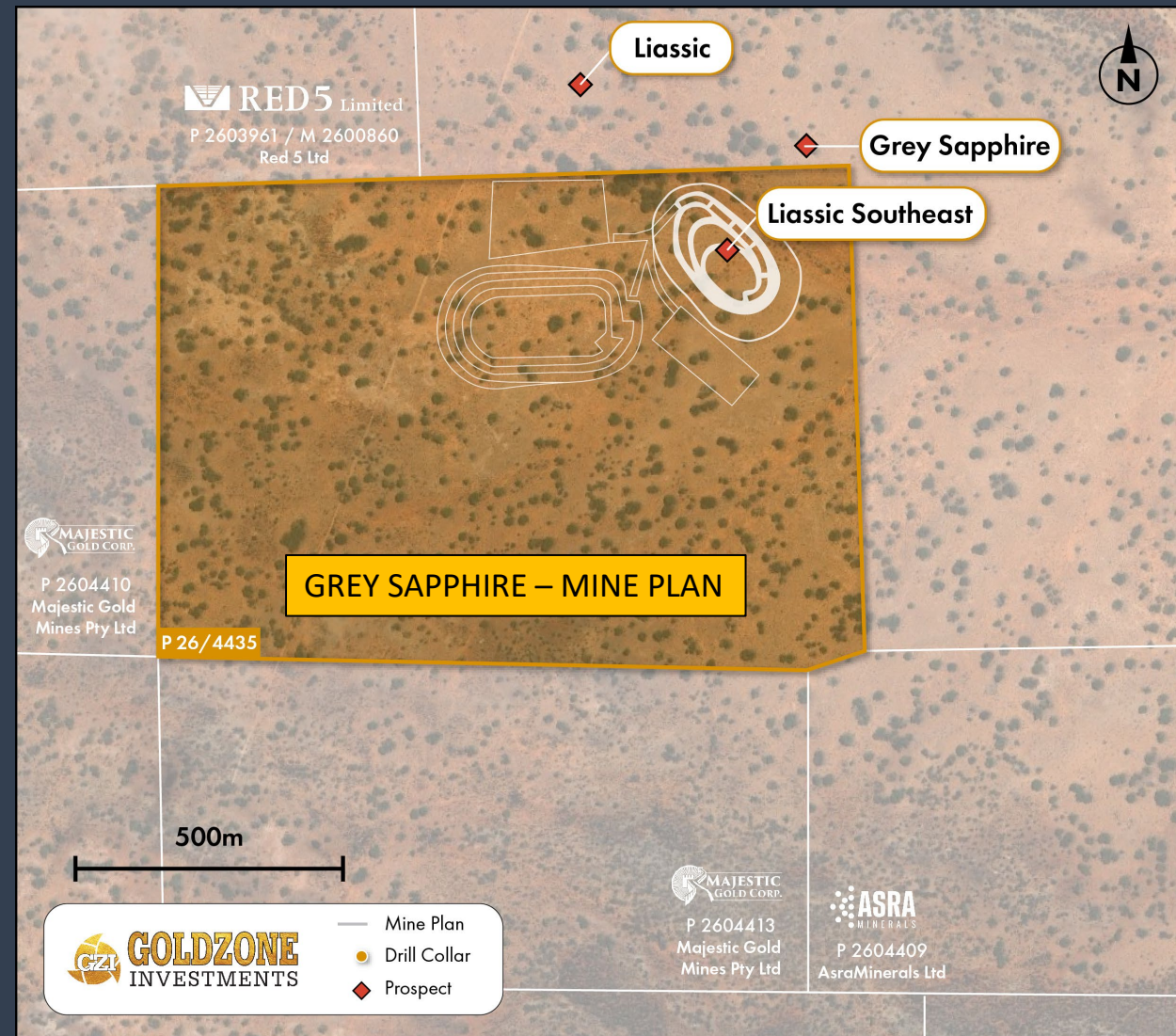


## GREY SAPPHIRE – P 26/4435

- "THE GREY SAPPHIRE AND LIASSIC PROSPECTS DEFINED BY SILVER LAKE RESOURCES ON LEASE M26/0402 COMPRISE A JORC COMPLIANT RESOURCE OF 14,352 OUNCES (210.6 KT @ 2.12 G/T). THE STRIKE EXTENSION OF THESE RESOURCES CONTINUES TO THE SOUTH-EAST AND EXTENDS INTO P26/3173\*. FURTHER DRILLING ON P26/3173 [NOW GZI'S P26/4435], APPROXIMATELY 250 METRES TO THE SOUTH OF THE LIASSIC DEPOSIT HAS IDENTIFIED ANOTHER DISCRETE ZONE OF MINERALISATION."<sup>1</sup>
- MINE PLAN SUBMITTED BY SILVERLAKE RESOURCES.<sup>2</sup>
- EXCELLENT POTENTIAL TO CONVERT LEGACY WORK INTO ACTIVE MINE WITH MINIMAL RISK.
- GOLDZONE HAS POW IN PLACE FOR ADDITIONAL INFILL DRILLING AS MAY BE REQUIRED.
- EXPLORATION POTENTIAL IN SW SECTOR OF TENEMENT.

<sup>1</sup> Mineralisation Report for Mining Tenement Application P 26/3173, Silverlake, July 2011

<sup>2</sup> Supporting Statement for Mining Lease over P 26/3173; Silverlake, July 2011

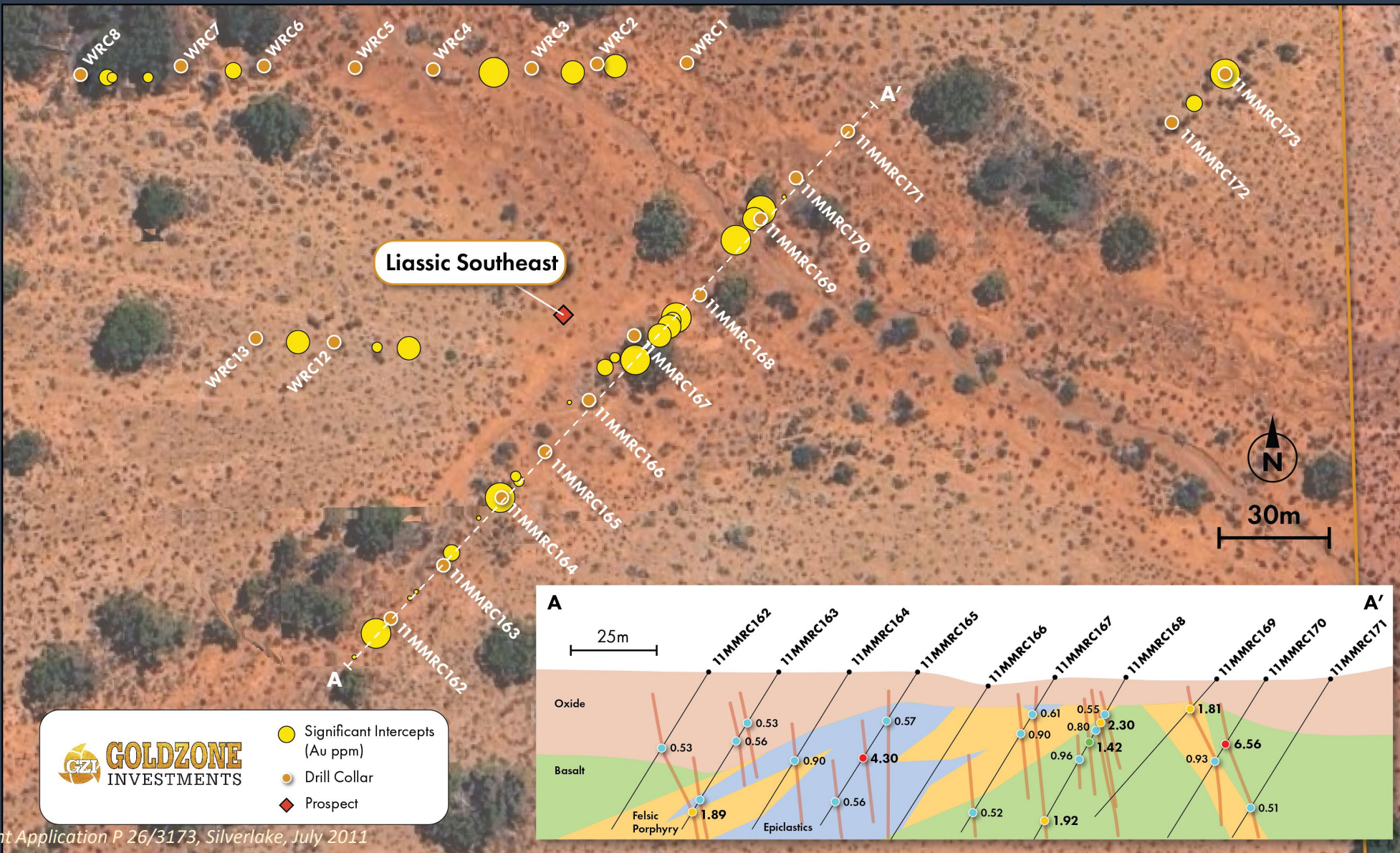






## GREY SAPPHIRE – P 26/4435

- CLOSE-UP OF GOLD INTERCEPTS IN NE CORNER OF TENEMENT
- CROSS-SECTION SHOWS INTERCEPTS IN DETAIL<sup>1</sup>



<sup>1</sup> Mineralisation Report for Mining Tenement Application P 26/3173, Silverlake, July 2011





## IRON ORE

### JOHNSTON RANGE / MT ELVIRE

- UP TO 66% FE IN 45 KM TREND WITHIN GZI TENEMENTS

### MT JACKSON

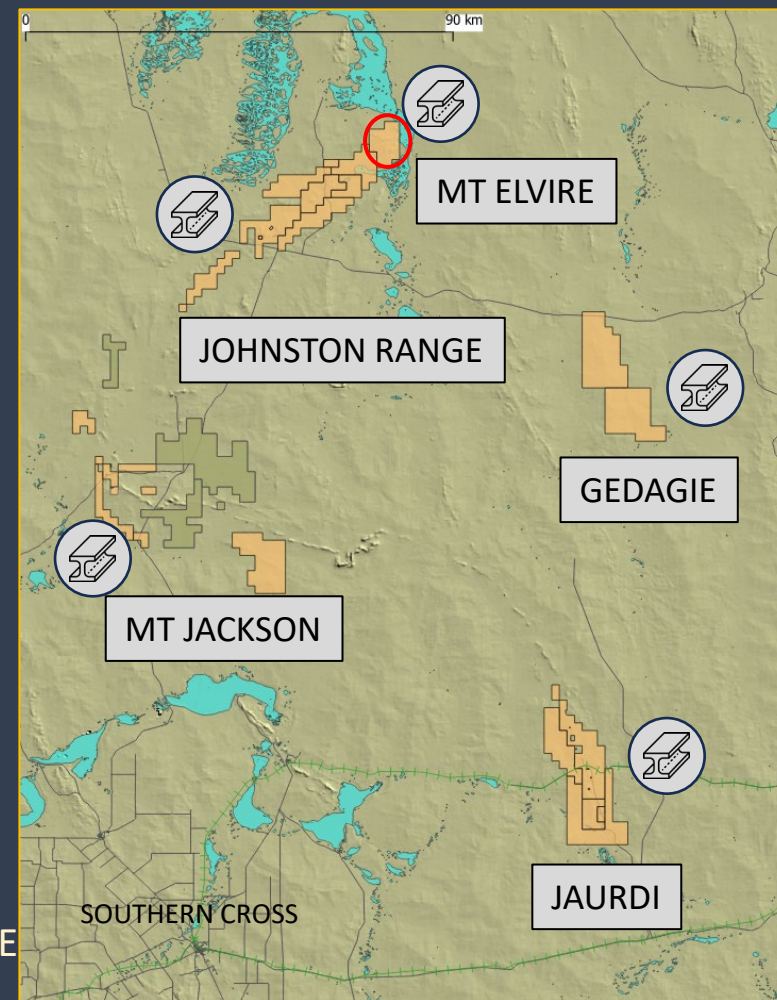
- EXTENSIVE DEPOSITS WITHIN GZI TENEMENTS
- DSO RIGHTS IN MULTIPLE TENEMENTS FARMED OUT TO MINRES

### GEDAGIE

- MAGNETIC ANOMALIES SUGGEST EXTENSIVE HEMATITE/MAGNETITE DEPOSITS

### JAURDI

- EXTENSIVE DRILLING / SURFACE SAMPLES INDICATE POTENTIALLY COMMERCIAL IRON ORE







## MT JACKSON

### MT JACKSON – IRON ORE TRANSACTION

- DSO RIGHTS IN FOUR TENEMENTS DIVESTED TO MINRES (MINERAL RESOURCES LIMITED) IN NOVEMBER 2023 (SHOWN IN GREEN ON RIGHT)

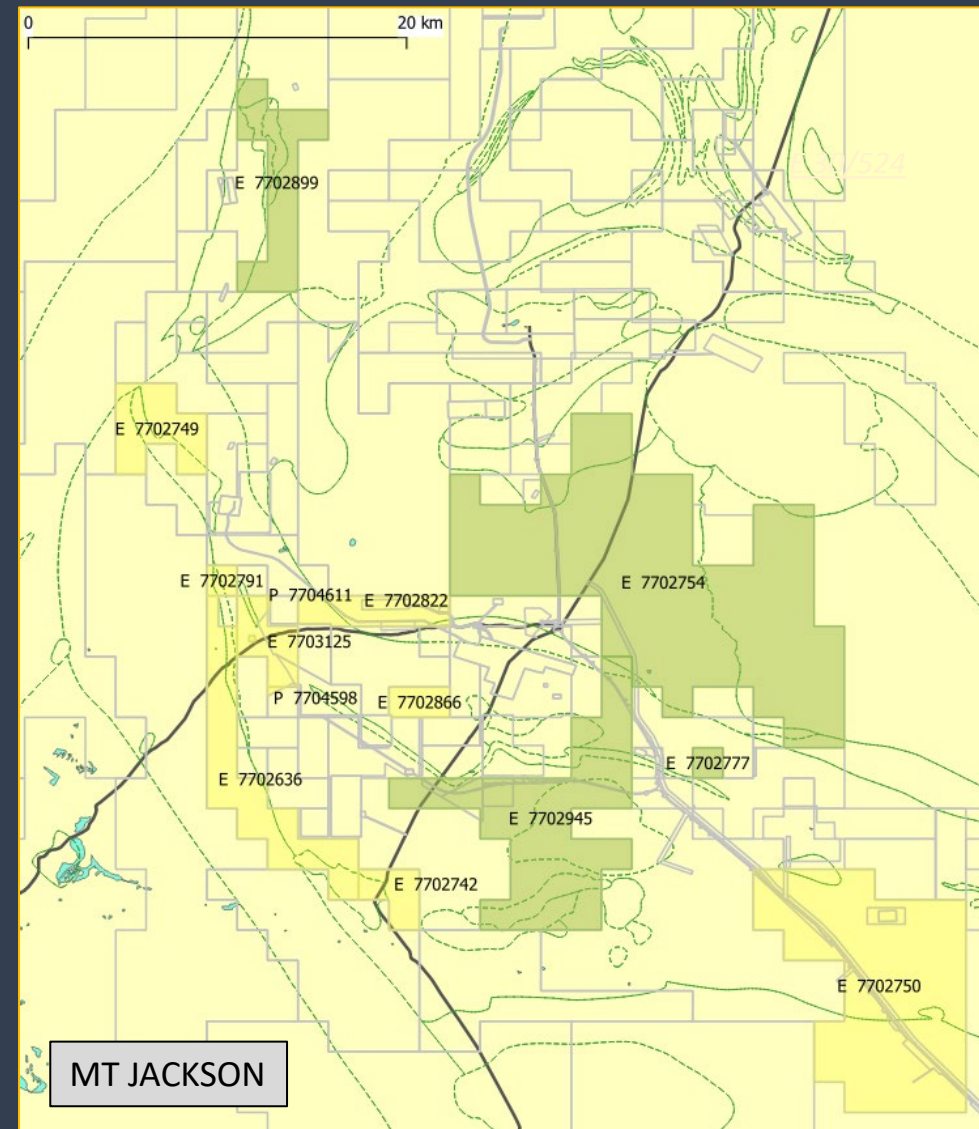
### GOLDZONE ROYALTY AND PAYMENTS

- COMPLETION AND MILESTONE PAYMENTS UP TO \$1.5M IN TOTAL
- \$1 / TONNE ROYALTY ON DSO
- MINRES RESPONSIBLE FOR ALL TENEMENT COSTS

### RIGHTS ARE FOR DIRECT SHIPPING ORE (DSO) ONLY

- MAGNETITE WILL BE NEGOTIATED SEPARATELY FROM DSO

TRANSACTION POTENTIAL VALUED FROM \$3 MILLION TO OVER \$10 MILLION IN ROYALTIES PER MINE NET TO GOLDZONE PLUS UP TO \$1 MILLION IN PROGRESS PAYMENTS. ADDITIONAL DSO MINES WOULD HAVE DIRECT MULTIPLIER EFFECT.





## JOHNSTON RANGE

IN 2025 TERRA RESOURCES' MAGNETIC INVERSION STUDY INDICATED IRON ORE TARGET SIZES OF APPROX **1.5 BILLION TONNES** IN JOHNSTON RANGE TENEMENTS (INC MT ELVIRE).

**MULTIPLE IRON ORE TARGETS ON 45 KM TREND CONTROLLED BY GOLDZONE**

### HIGH-GRADE ROCK-CHIPS

- Up to 66.3% Fe
- >45 km DISCONTINUOUS STRIKE

### DSO & MAGNETITE POTENTIAL

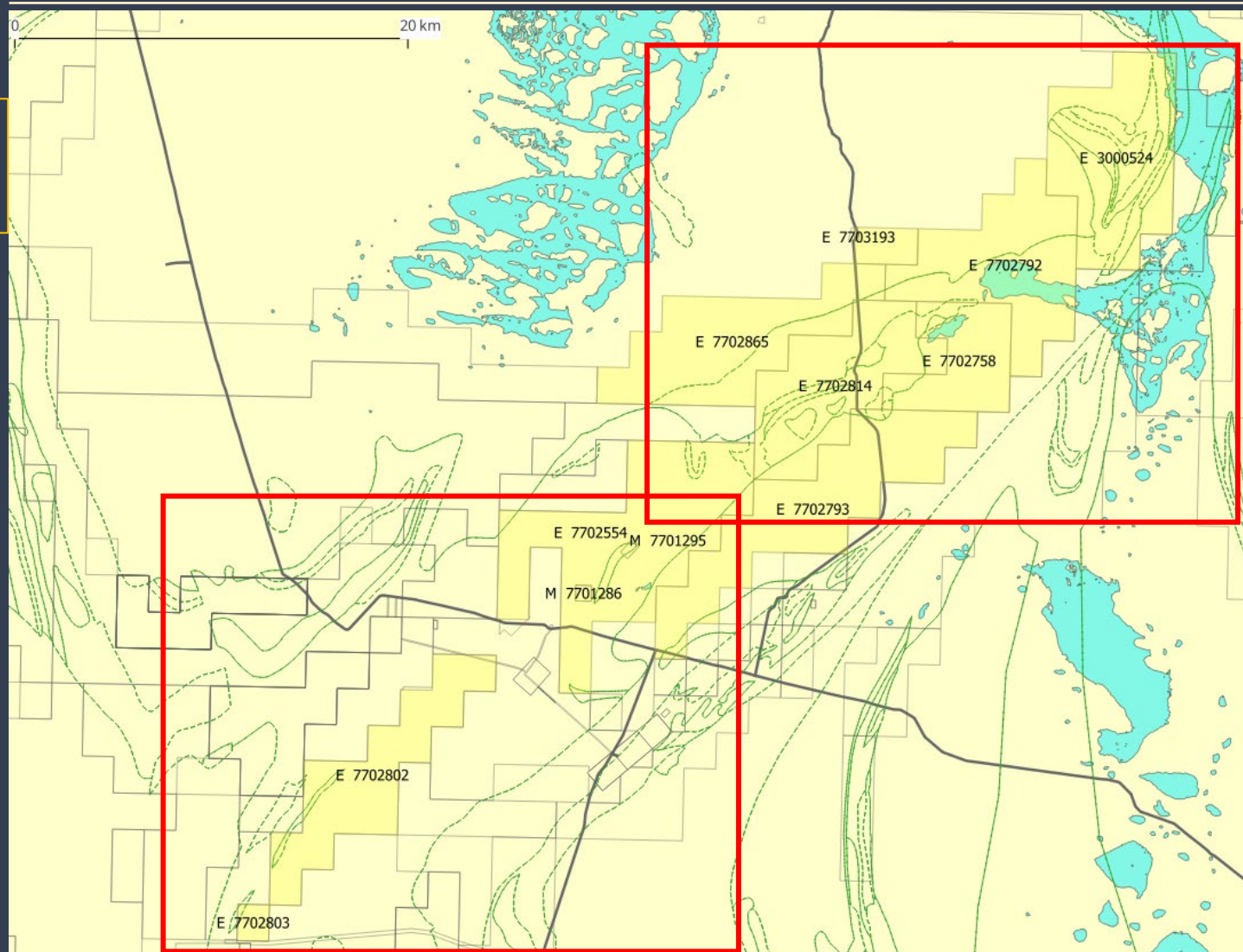
- OPTION TO TRANSPORT TO KOOLYANOBING THEN RAIL TO PORT OF ESPERANCE

### DRILL TESTING REQUIRED

- WALK UP OUTCROPPING TARGETS

RED OUTLINES INDICATE LOCATIONS OF FOLLOWING SLIDES.

Goldzone Tenements – Johnston Range







## MULTIPLE IRON ORE TARGETS ON 45 KM TREND CONTROLLED BY GOLDZONE

## HIGH-GRADE ROCK-CHIPS

- Up to 66.3% Fe
- >45 km DISCONTINUOUS STRIKE

## DSO & MAGNETITE POTENTIAL

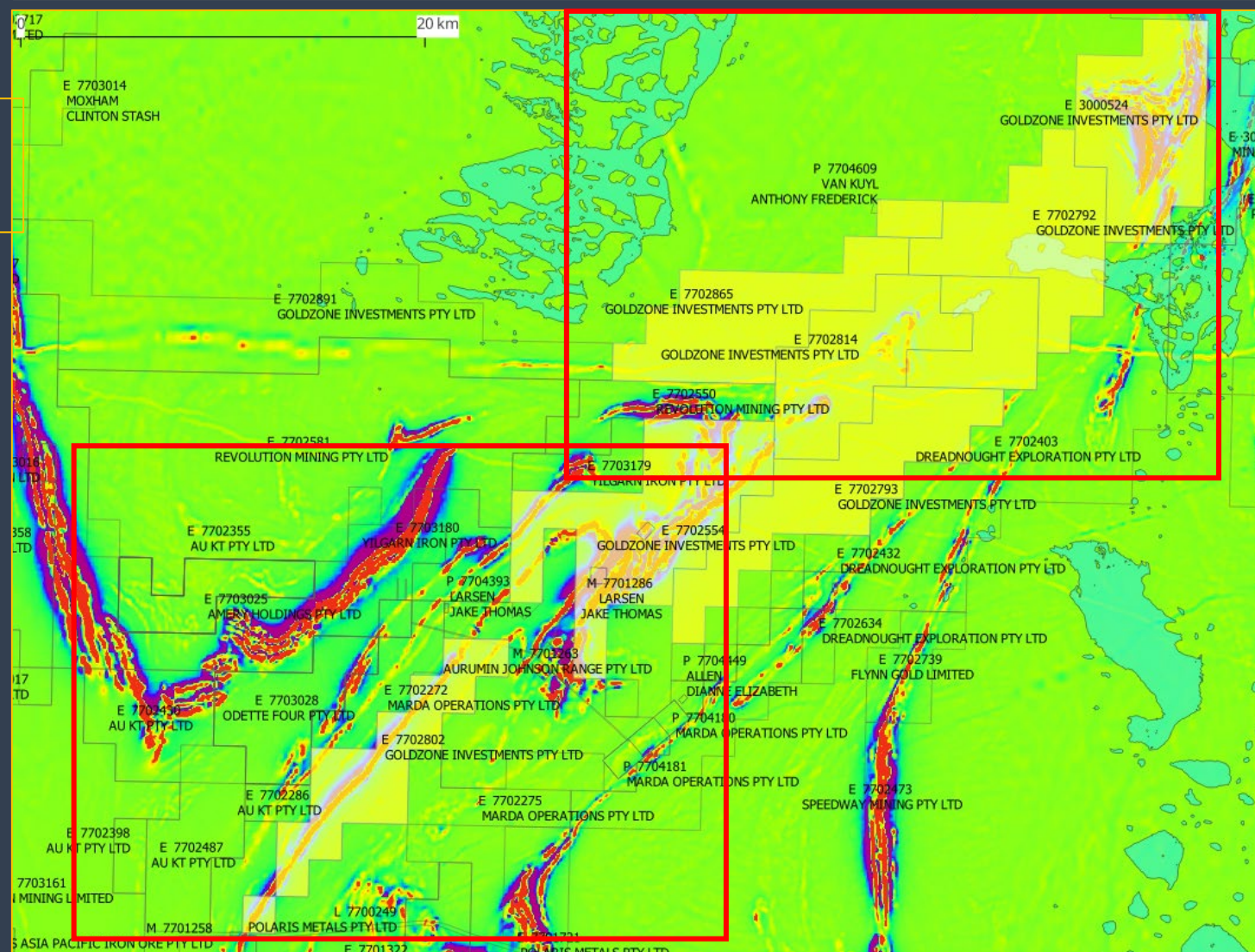
- OPTION TO TRANSPORT TO KOOLYANOBING THEN RAIL TO PORT OF ESPERANCE

## DRILL TESTING REQUIRED

- WALK UP OUTCROPPING TARGETS

RED OUTLINES INDICATE LOCATIONS OF FOLLOWING SLIDES.

## Goldzone Tenements over Aeromag (RTP1VD)







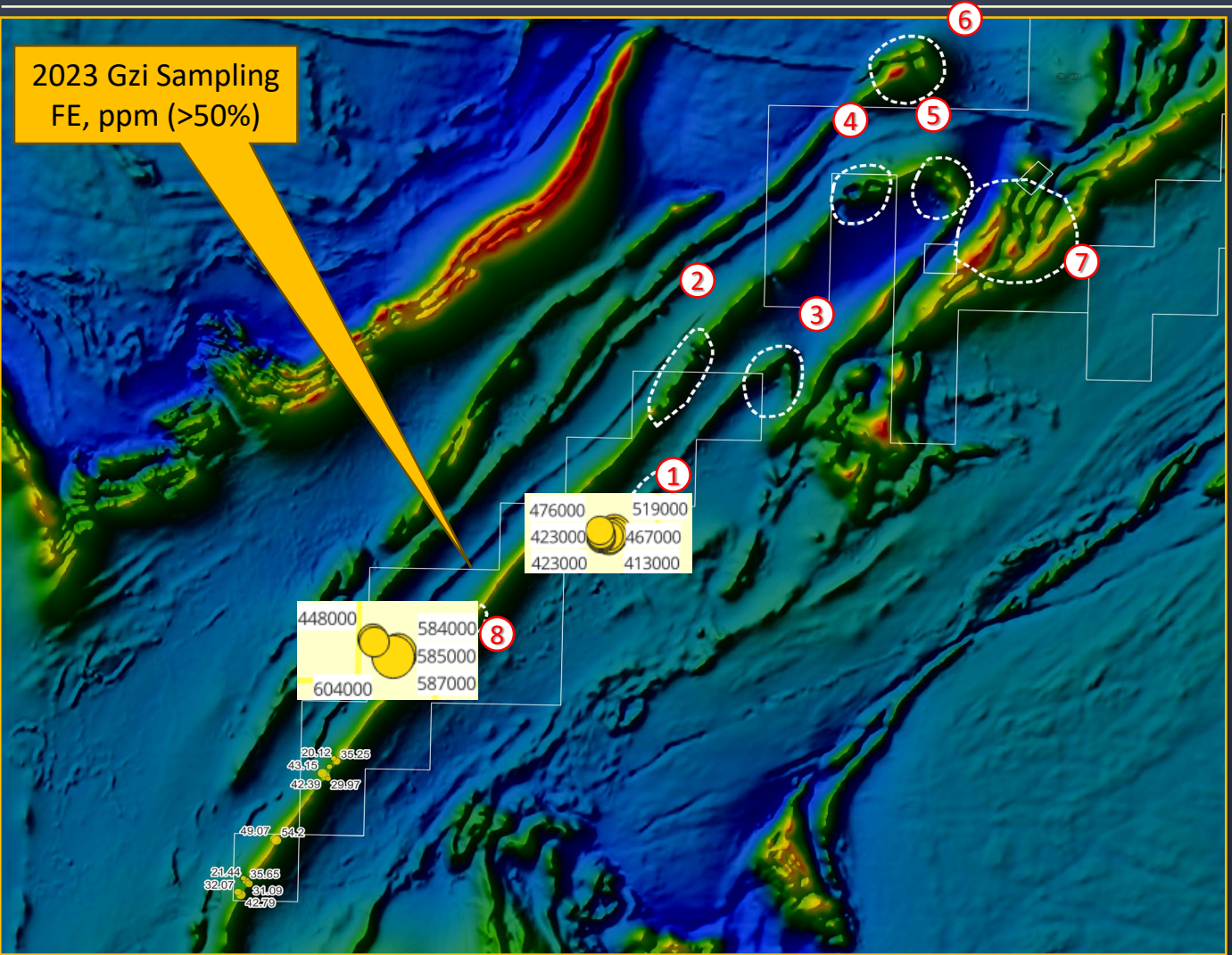
JOHNSTON RANGE

- MULTIPLE TARGETS IDENTIFIED ON MAG MAPPING
- 2023 GZI SAMPLING CONFIRMS FE PROSPECTIVITY OF KEY TARGETS 1 AND 8.

TerraResources assessment (2023)

Target	Ranking	Description
1	2	Bounded by N-S and NW-SE faults.
2	1	Bounded by NE-SW faults with serpentinite to the north.
3	1	Apex of fold hinge.
4	2	Fold and fault structures.
5	1	Apex of fold hinge.
6	3	Fold and fault structures with NW-SE dykes. Outside tenement.
7	2	Thickening of BIFs towards NE with complex fault structures.
8	2	Interpreted BIF with change of orientation and known Fe occurrences along the same BIF lens to the SW.

Target Generation in SW Johnston Range tenements over Aeromag (TMI RTP)







Target	Ranking	Description
9	3	Apex of fold hinge. Partially outside tenement.
10	2	Apex of fold hinge with complex fault structures and close proximity to Fe occurrence.
11	3	Bounded by NE-SW faults. Untested area.
12	3	Bounded by NNE-SSW faults. Untested area.
13	2	Southern extension of high Fe occurrences.
14	2	Northern extension of high Fe occurrences.
15	3	Apex of fold hinge and possible flat-lying stratigraphy.
16	1	Highest magnetic anomaly over the entire project area (~28000 – 29000 nT). Untested area.
17	2	Adjacent to the highest magnetic anomaly over the entire project area. Untested area.

[illegible]



## MT ELVIRE

### E 30/524

#### HIGH-GRADE ROCK / SOIL ASSAY SAMPLES

- Up to 62.4% Fe
- 12 km DISCONTINUOUS STRIKE

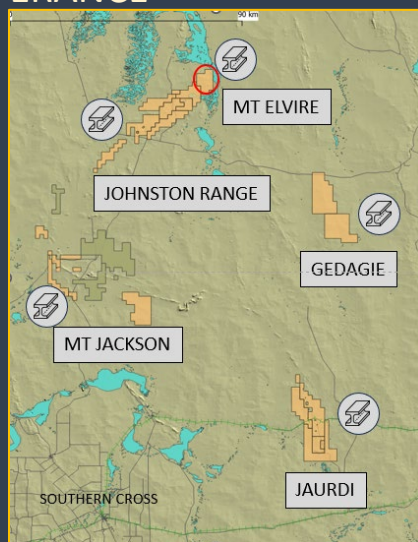
#### DSO & MAGNETITE POTENTIAL

- OPTION TO TRANSPORT TO KOOLYANOBING THEN RAIL TO PORT OF ESPERANCE

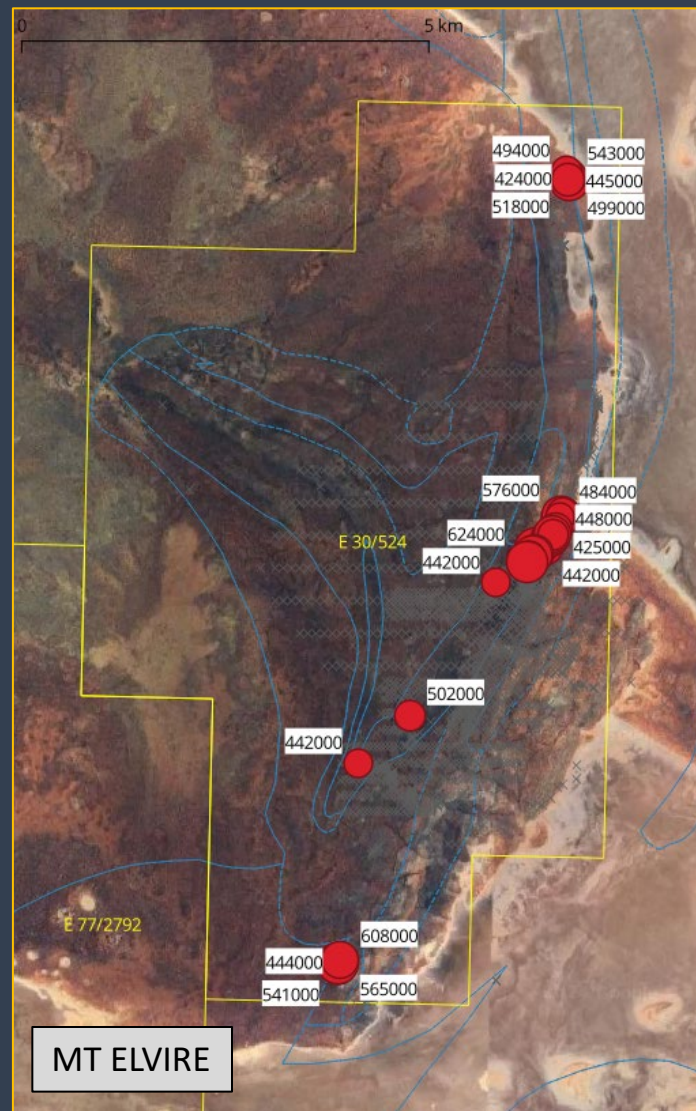
#### DRILL TESTING REQUIRED

- WALK UP OUTCROPPING TARGETS

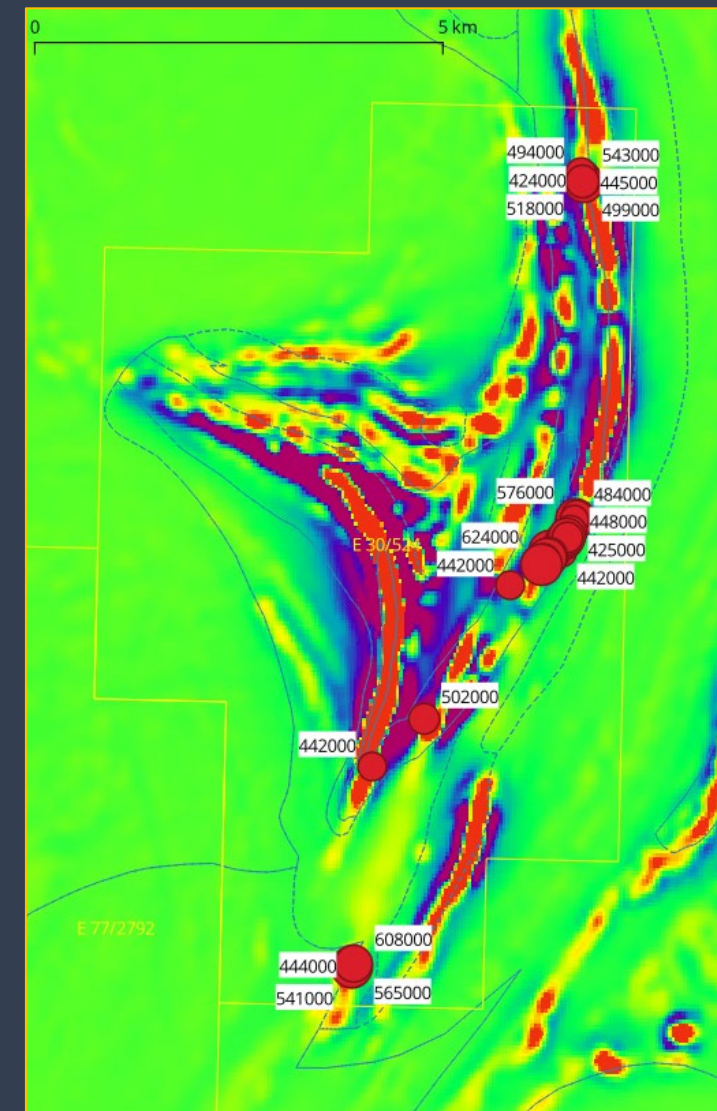
BULK OF TENEMENT YET TO BE EXPLORED



*E 30/524 over Satellite – Fe > 48% (ppm)*



*E 30/524 over Aeromag (RTP1VD) – Fe > 48% (ppm)*







# IRON ORE ASSETS - PROJECT REVIEW



## GEDAGIE

IRON ORE TARGETS ON EXTENSIVE TREND CONTROLLED BY GOLDZONE.

MAGNETIC MAPPING SHOWS STRONG NW-SE LINEAMENT CONNECTING GZI TENEMENTS.

POTENTIAL IRON ORE DEPOSIT MAPPED IN SOUTHERN TENEMENT – E 30/532:

- ESTIMATES RANGE UP TO 366 MT OF PRIMARY BIF / WEATHERED ZONE MATERIAL IN PLACE AT PERINVALE SOUTH PROSPECT<sup>1</sup>

GZI 2024 SOIL SAMPLING CONFIRMS FE PROSPECTIVITY.

HIGHLY PROSPECTIVE, BUT FEATURE REMAINS UNDRILLED.

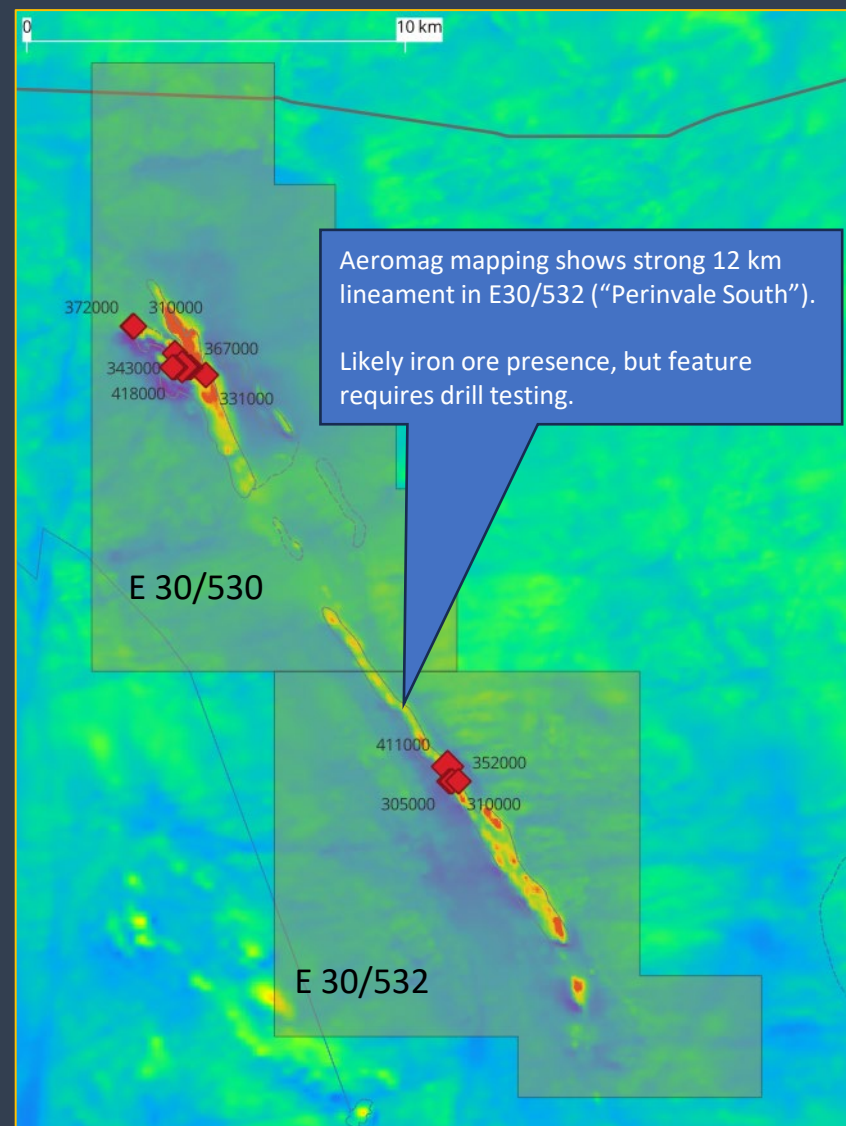
<sup>1</sup>E 30/415 MODELLING OF AIRBORNE MAGNETIC DATA (CORE GEOPHYSICS, 2012)

PRIMARY BIF: 325 MT +/- 25% (244 MT – 406 MT)

WEATHERED ZONE MATERIAL 41 MT +/- 25% (30 MT – 51 MT)



Goldzone Tenements – FE (ppm) over magnetics (TMI)





## JAURDI

### HIGH-GRADE SAMPLES

- UP TO 80% FE
- >26KM CONTINUOUS TREND

### GZI HOLDS KEY TENEMENT POSITIONS

- CONTIGUOUS TENEMENT PORTFOLIO CONTROLS TREND

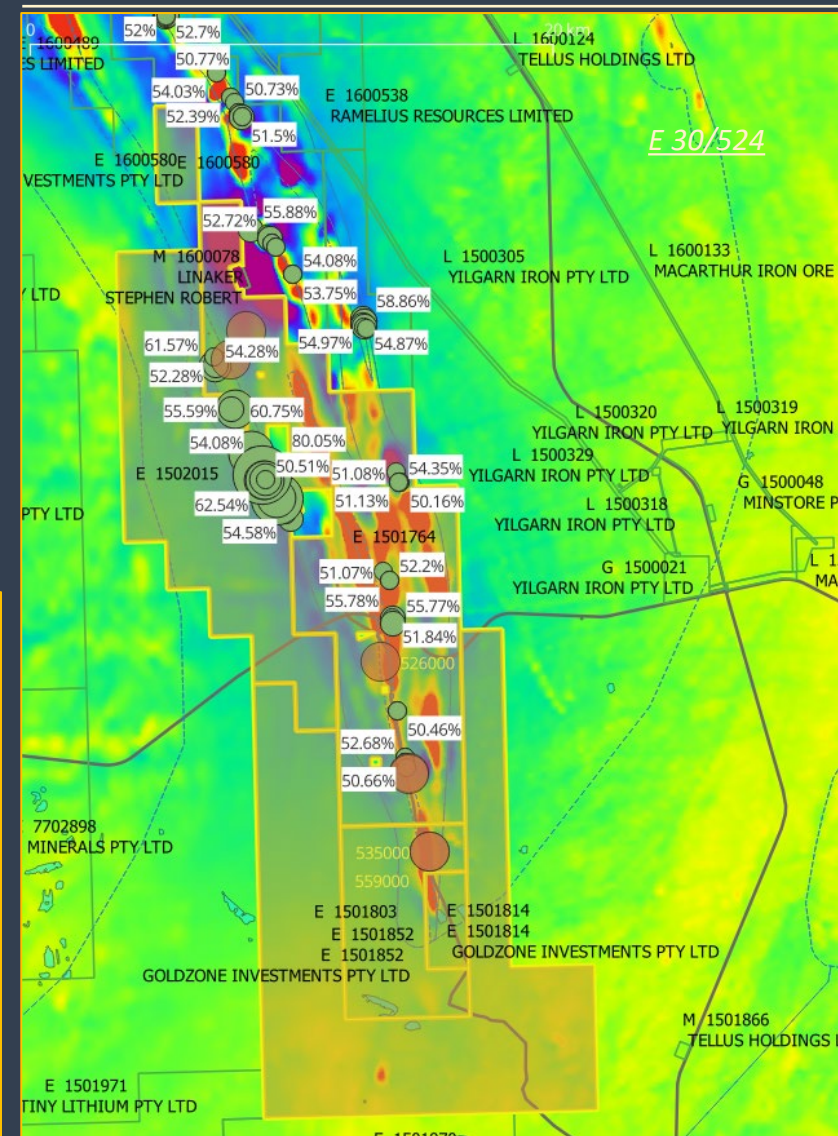
### DRILL TESTING REQUIRED

### DSO POTENTIAL

- ADJACENT TO INFRASTRUCTURE (RAILWAY PASSES THROUGH CENTRE OF PROJECT AREA) – ECONOMIC AND EXTENSIVE.



Jaurdi Project – Fe (>50%) – drillholes + GZI samples (brown)







## LITHIUM / RARE EARTHS

### MT ELVIRE

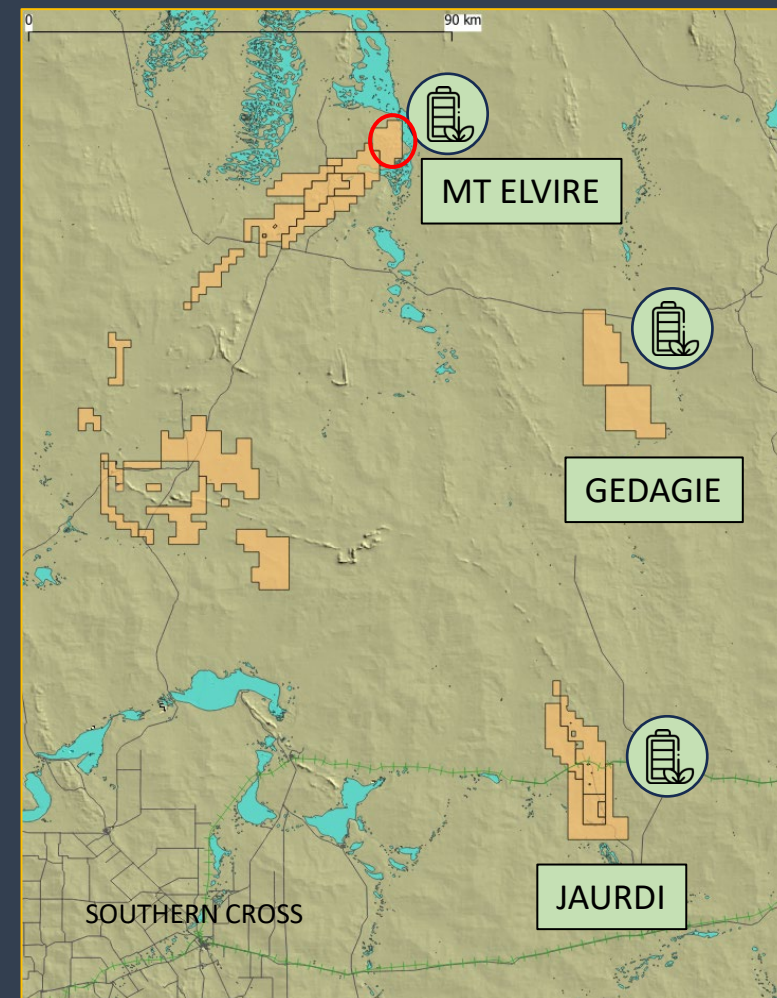
- ANOMALOUS LITHIUM MAPPED AT SURFACE IN EXTENDED TREND
- ANOMALOUS RUBIDIUM
- REE / NIOBIUM POTENTIAL
- ADDITIONAL POTENTIAL WITHIN TENEMENT

### GEDAGIE

- LITHIUM IDENTIFIED IN SOIL/ROCK CHIP ANALYSIS

### JAURDI

- ANOMALOUS LITHIUM IDENTIFIED WITHIN PROJECT AREA

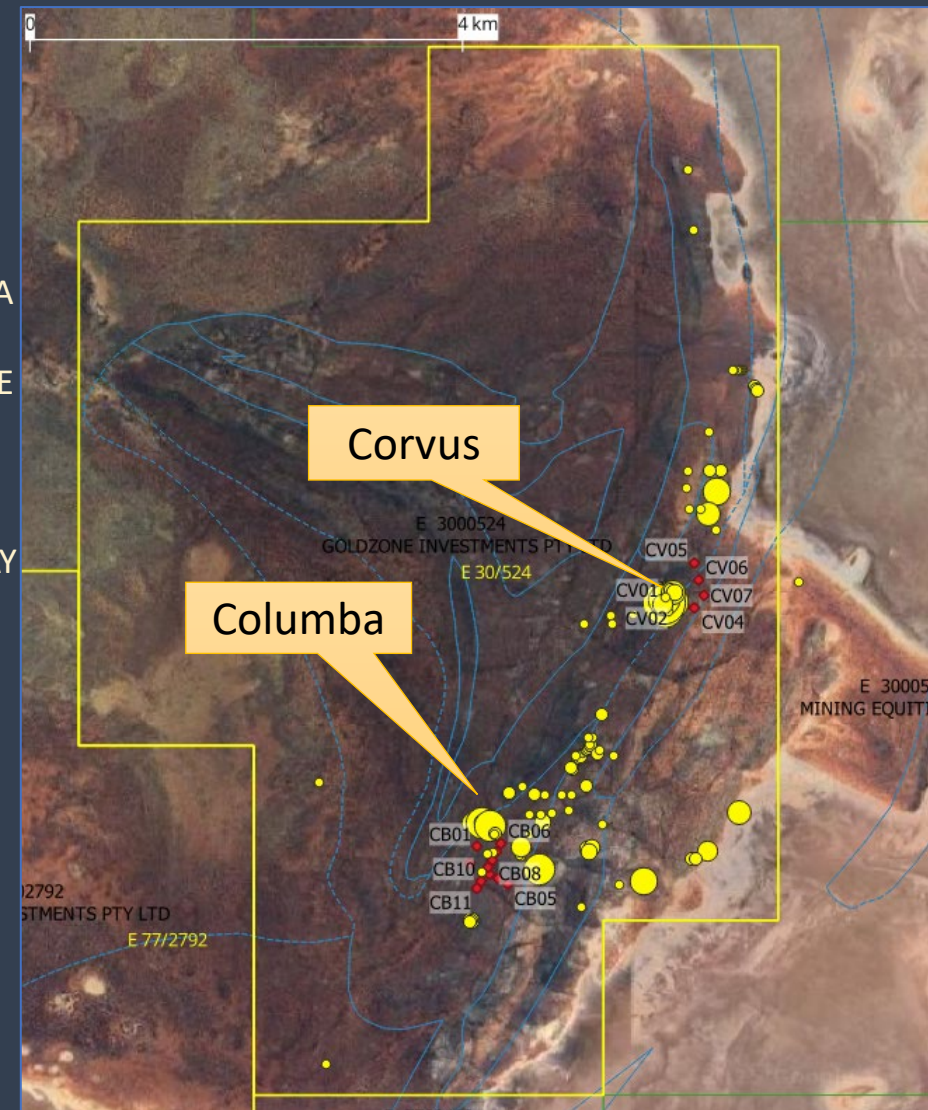




## MT ELVIRE – E 30/524 – LI/REE

- EARLIER THIS YEAR, THE COMPANY COMMISSIONED AN INDEPENDENT GEOLOGIST TO REVIEW THE LITHIUM AND RARE EARTH POTENTIAL IN E 30/524
- THE REPORT WAS HIGHLY ENCOURAGING AND THE COMPANY SUBSEQUENTLY APPLIED FOR A CO-FUNDING GRANT FOR A PROPOSED 2,920M (11 HOLE) DRILLING PROGRAM IN E 30/524 TO FURTHER ASSESS TWO OF ITS LITHIUM/REE PROSPECT AREAS (ADJOINING FIG SHOWS THE PROPOSED LOCATIONS).
- **GOLDZONE WAS SUCCESSFUL IN ITS APPLICATION**, WITH THE GRANT TO PROVIDE FUNDING FOR 50% OF THE DRILLING COSTS AND WITH THE WORK TO BE COMPLETED PRIOR TO 31 MAY 2026. WHILE ENCOURAGING, TIMING OF THIS PROGRAM AND OTHER FUTURE OPERATIONS WILL STILL BE SUBJECT TO MARKET CONDITIONS.
- A COPY OF THE TECHNICAL REVIEW “MT ELVIRE – RARE METAL PEGMATITE TARGETING REPORT” CAN BE VIEWED OR DOWNLOADED FROM OUR WEBSITE ([WWW.GZI.COM.AU](http://WWW.GZI.COM.AU))

E 30/524



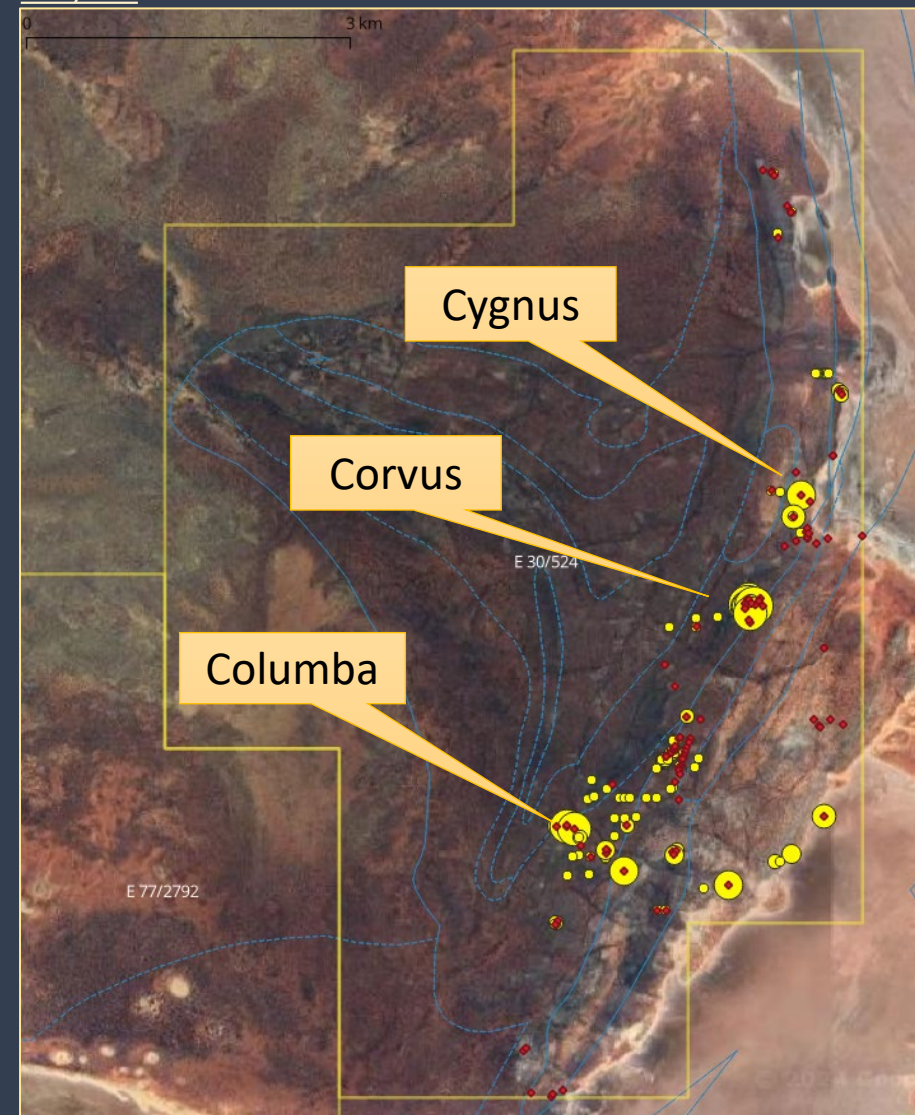




## MT ELVIRE – E 30/524 - LITHIUM

- GOLDZONE HAS IDENTIFIED MULTIPLE SIGNIFICANT LI-CS-TA (LCT) PEGMATITE SWARMS THAT CONTAIN ANOMALIES WITHIN THE PEGMATITES.
- PEGMATITE TRENDS ALONG A 12 KM BAND ON EASTERN SECTOR OF TENEMENT.
- SENTINEL SATELLITE IMAGERY INDICATES POTENTIAL EXTENSION OF PROSPECTIVE AREA TOWARD NW SECTOR OF THE TENEMENT.
- PEAK ASSAY RESULTS TO DATE CONFIRM UP TO 5,230 PPM LI (1.13%  $\text{Li}_2\text{O}$ ) PLUS 5,610 PPM RB AND ANOMALOUS RARE EARTH RESULTS. ALL AT HEAVILY WEATHERED SURFACE.
- OVER 1,300 ROCK AND SOIL SAMPLES ACQUIRED AND ASSAYED BY GOLDZONE IN 2022 & 2023.
- MAP SHOWS THE LOCATION OF THE “FRACTIONATED” SAMPLES – I.E SAMPLES WITH BOTH A POTASSIUM/RUBIDIUM RATIO  $< 50$  AND NIOBIUM/TANTALUM RATIO  $< 5$ . THE LOCATIONS ARE SHOWN IN RED AND OVERLIE LITHIUM IDENTIFIED IN LAB ASSAYS (YELLOW BUBBLE MAP;  $32 < \text{LI} < 3300$  PPM).
- THREE PROSPECTIVE AREAS IDENTIFIED (CYGNUS, CORVUS AND COLUMBA)
- CENTRAL AND WESTERN SECTORS YET TO BE EXPLORED BY GOLDZONE.

E 30/524





## MT ELVIRE – E 30/524 - RUBIDIUM

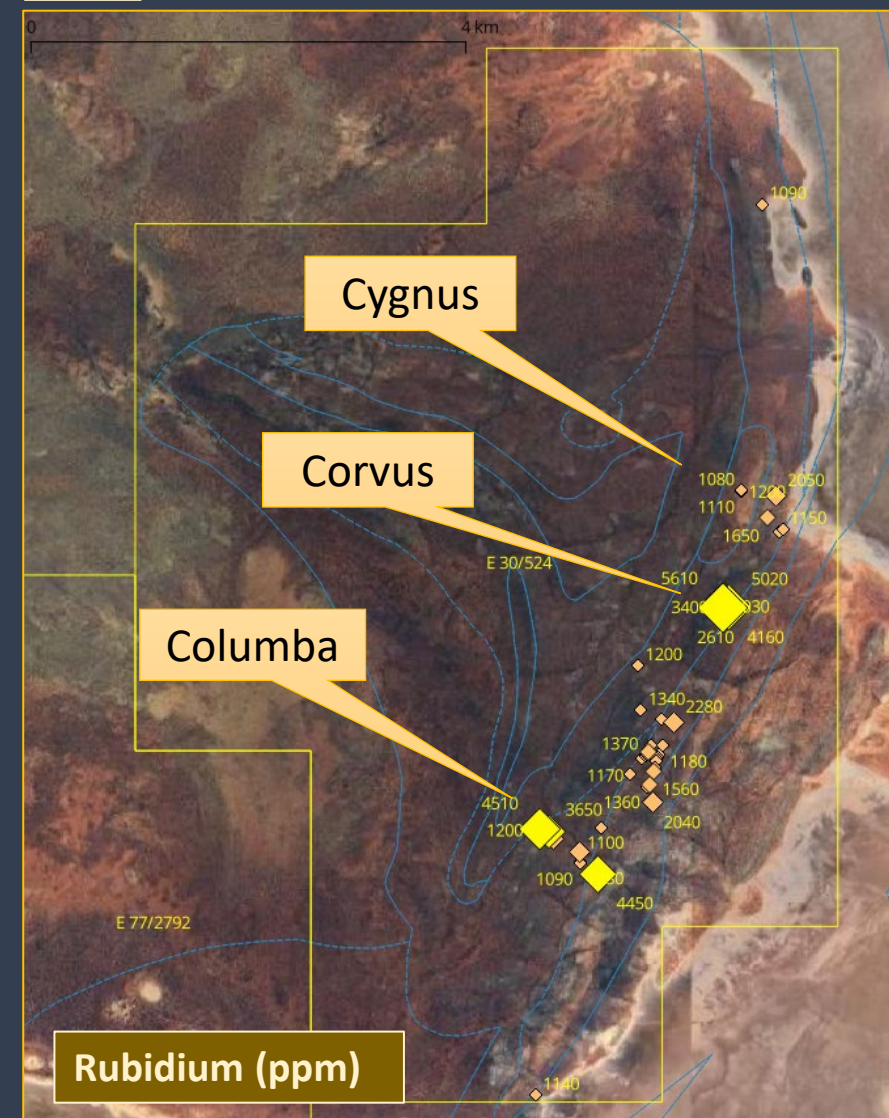
RUBIDIUM (RB) IS A CRITICAL RAW MATERIAL FOR VARIOUS HIGH-TECH APPLICATIONS, INCLUDING THE DEVELOPMENT OF NEW ENERGY CONVERSION TECHNOLOGIES AND NEW COMMUNICATION TECHNOLOGIES. KEY APPLICATIONS INCLUDE:

- DEFENCE AND MILITARY: NIGHT VISION IMAGING, SPECIAL GLASS, RADIATION DETECTORS, PHOTOELECTRIC TUBES, RADIO ELECTRONIC TUBES AND MILITARY INFRARED SIGNAL LIGHTS.
- AEROSPACE: ION PROPULSION ENGINES AND ATOMIC CLOCKS.
- COMMUNICATIONS: ION CLOUD COMMUNICATIONS AND FIBRE OPTIC COMMUNICATIONS. □
- EMERGING ENERGY POWER GENERATION: MATERIALS FOR MAGNETOHYDRODYNAMIC POWER GENERATION AND THERMIONIC POWER CONVERSION.
- MEDICAL: SEDATIVES, TRANQUILISERS AND MEDICATIONS FOR TREATING EPILEPSY AND SYNTHETIC ALKALINE SOLVENTS.
- INDUSTRIAL CATALYSTS: WIDELY USED IN AMMONIA SYNTHESIS, SULFURIC ACID SYNTHESIS, HYDROGENATION, OXIDATION AND POLYMERISATION REACTIONS.
- ELECTRONIC DEVICES: IMPORTANT MATERIALS FOR PHOTOVOLTAIC CELLS, PHOTOEMISSION TUBES, TV CAMERA TUBES AND PHOTOMULTIPLIER TUBES.

RESEARCHERS HAVE ALSO RECENTLY PROPOSED THE USE OF RUBIDIUM FOR CHEMICAL STORAGE WITHIN HYDROGEN BATTERIES, EXPANDING A POTENTIAL MARKET FOR THIS CRITICAL MINERAL<sup>1</sup>

<sup>1</sup>SUMMARY COURTESY EVEREST METALS CORPORATION ASX RELEASE 21 Aug 2024

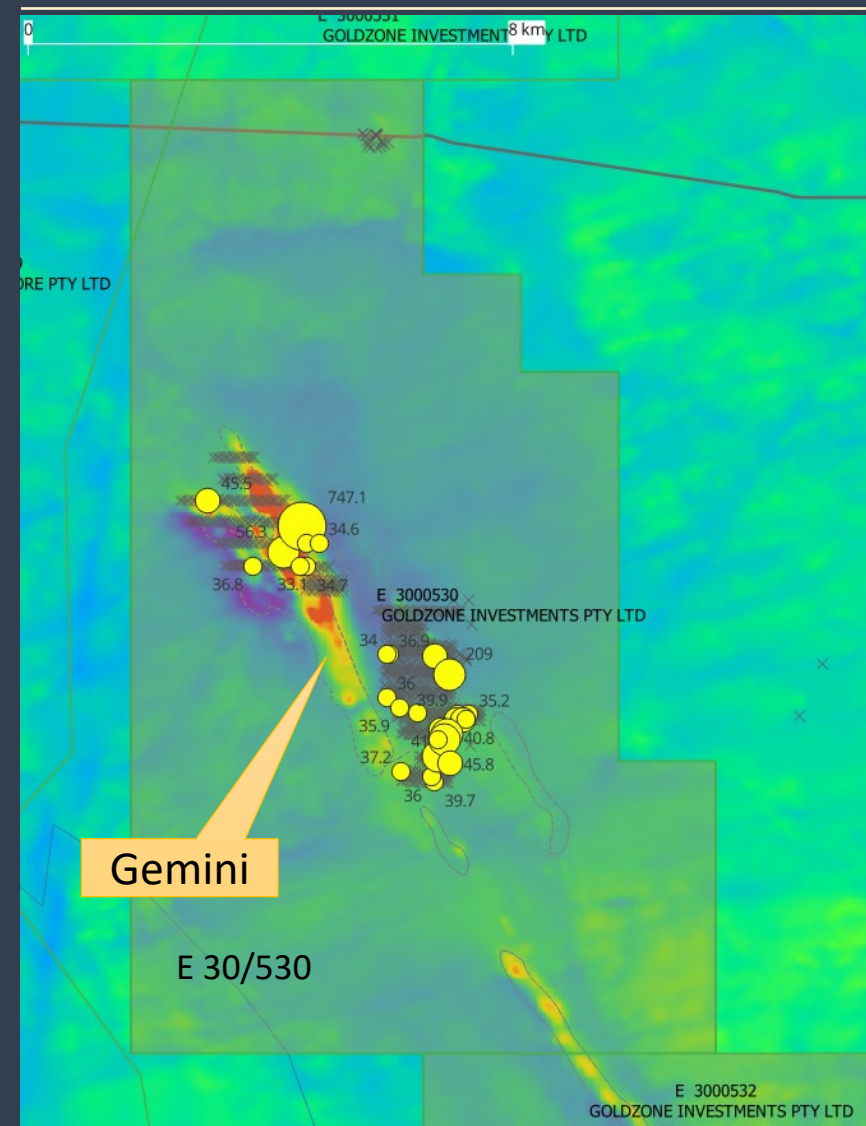
E 30/524







- “GEMINI” PROSPECT
- GREENSTONE - ANOMALOUS LITHIUM SAMPLES AT SURFACE
- E 30/530 – ROCK AND SOIL SAMPLES RANGE UP TO 747 PPM
- APPROXIMATELY 145 KM NW OF KALGOORLIE.

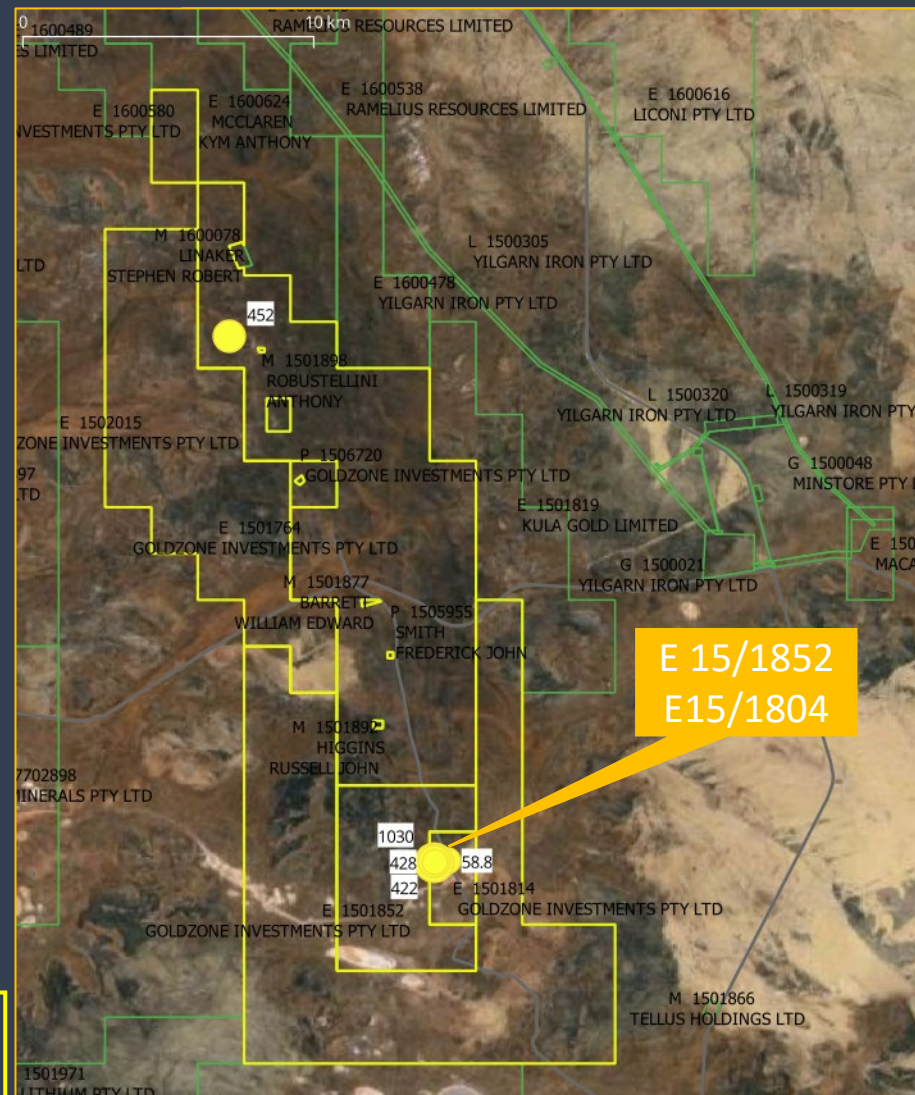




- ANOMALOUS LITHIUM SAMPLES – AT SURFACE:
- E 15/1764
- E 15/1852
- E 15/1804 – UPPER RANGE FROM 422 PPM TO 1,040 PPM
- ADDITIONAL SAMPLING PLANNED.

SITUATED APPROXIMATELY 88 KM EAST OF SOUTHERN CROSS  
– 30 KM NORTH OF GREAT EASTERN HIGHWAY.

## Goldzone Tenements



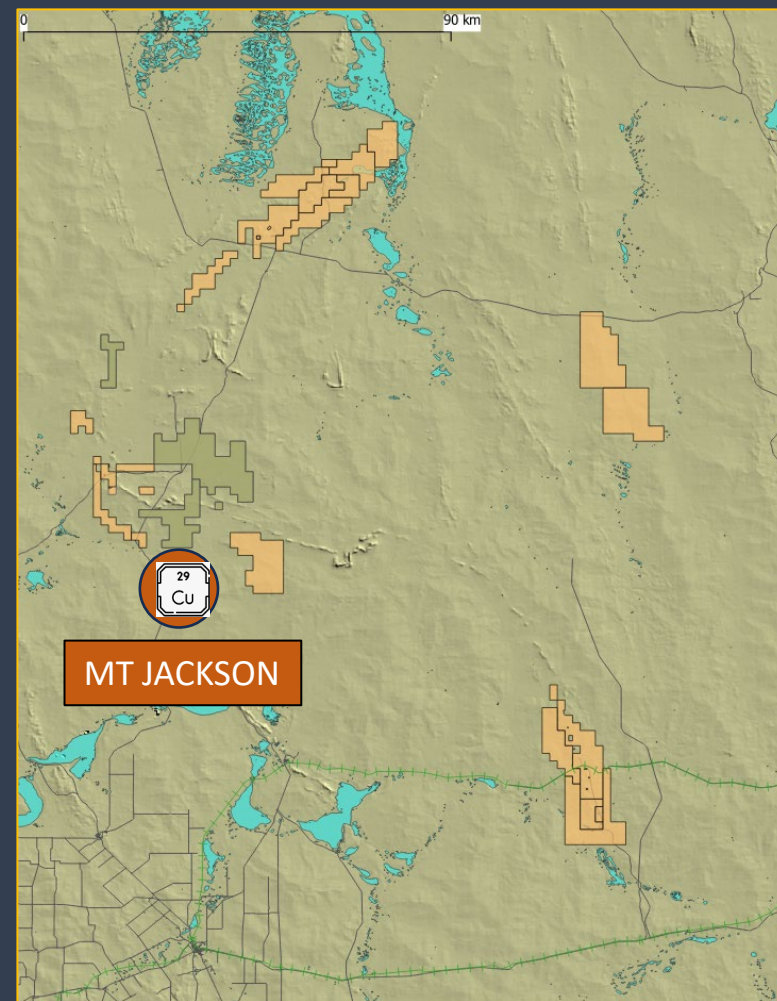




## COPPER

## MT JACKSON

- HISTORICAL COPPER MINING IN REGION
- ANOMALOUS COPPER MAPPED BY GOLDZONE AT SURFACE AND AT DEPTH IN SOUTH EAST MT JACKSON AREA:
  - E 77/2626
  - E 77/2742
  - E 77/3250
- ADDITIONAL POTENTIAL IN REGION ALONG LOCAL CONTACT

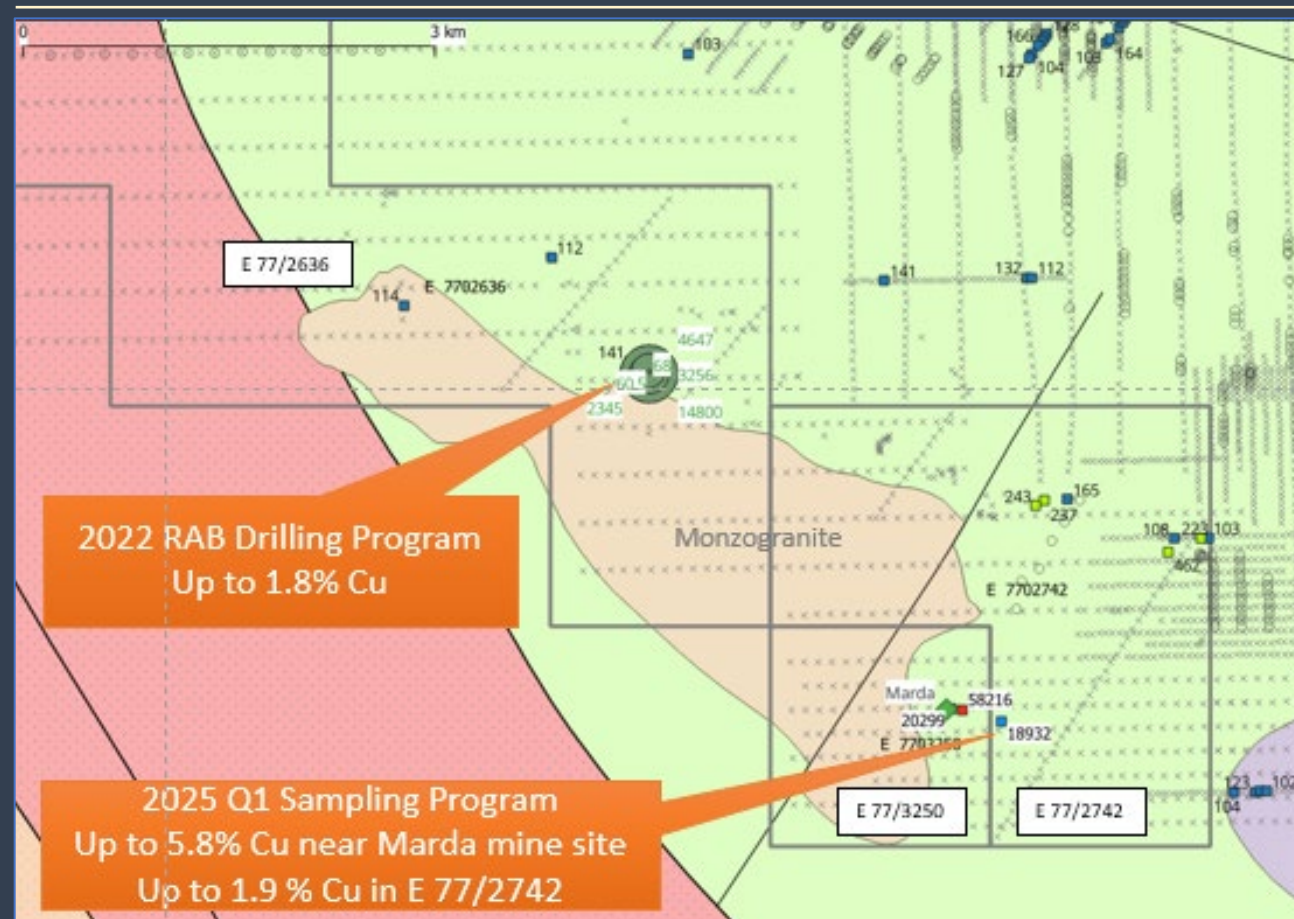




## MT JACKSON

- GOLDZONE'S 2022 RAB DRILLING IN E 77/2636 IN THE SE REGION OF THE MT JACKSON PROJECT RECOVERED COPPER (CU) SAMPLES RANGING UP TO 1.48%, WITH NEARBY SURFACE SAMPLES CONTAINING UP TO 1.3% CU.
- IN 2024, THE COMPANY THEN EXTENDED THE POTENTIAL PROSPECTIVITY IN THE AREA WITH ANOMALOUS CU SAMPLES TAKEN ON TREND TO THE SOUTH EAST IN E 77/2742
- IN EARLY 2025, ROCK-CHIP SAMPLING IN E77/2742 AND IN AND THE VICINITY OF THE HISTORIC MARDA COPPER MINE IN E 77/3250 (MARDA PRODUCED 16 TONS OF CARBONATE -OXIDE COPPER ORE) YIELDED ASSAY RESULTS UP TO 5.8% CU - THE HIGHEST COPPER SAMPLES WE HAVE SEEN TO DATE. THE ANOMALOUS DRILLING AND SURFACE SAMPLES ARE GENERALLY CLOSE TO A LOCAL AMPHIBOLITE BASALT/MONZOGRANITE CONTACT. MORE WORK IS PLANNED TO FOLLOW UP.

SE Mt Jackson – Copper samples (ppm)







## CAPITAL STRUCTURE

### YILGARN GROUP LIMITED

SHARES ON ISSUE (FULLY PAID ORDINARY)	27,780,629
“CLASS A” PERFORMANCE RIGHTS (exp 30/06/25)	600,000
“CLASS B” PERFORMANCE RIGHTS (exp 05/04/27)	1,320,000
“CLASS D” OPTIONS (25c Strike; exp 30/06/25)	1,796,375
TOTAL FULLY DILUTED	32,497,004

Last Raising @ 55c – Fully diluted valuation - \$17.87 M

ZERO DEBT





## CONTACT

**Address:**

2 Cargill Street  
Victoria Park WA 6100

**Phone:** 1800 100 100

**Email:** [reception@gzi.com.au](mailto:reception@gzi.com.au)

**Web:** [www.gzi.com.au](http://www.gzi.com.au)

**Steve Sell** 0403 772 300  
[steve@gzi.com.au](mailto:steve@gzi.com.au)

**Laurence Roe** 0412 595 921  
[laurence@gzi.com.au](mailto:laurence@gzi.com.au)

**Andrew Shearer** 0411 720 516  
[Andrew@valas.com.au](mailto:Andrew@valas.com.au)

